

HYDRAULIC POWER UNIT DC CONSTANT RUNNING 2.5 LITRES PER MINUTE

Manufactured specifically for marine autopilot steering applications the versatile PC20 and PC25 constant running pumps use a heavy duty 2 brush or fan-cooled 4 brush motor to deliver 2.0 or 2.5 litres per minute respectively. Designed to be used for heavy duty applications on larger yachts or commercial craft these units come fitted with pressure compensated flow controls, relief valves and cylinder lock valves as standard.

Description

Once the hard-over time has been set via the speed control, steering is achieved by switching a double acting solenoid valve. The motor and precision gear pump are protected by a pre-set relief valve and toughened check valve components positively lock the steering on course. The unit comes fitted with an 0.75 litre aluminium oil tank.

Application

Designed specifically for the marine autopilot market, these 12V and 24V D.C. pumps are used on the larger sailing craft or commercial vessels. They can be used with single or twin double acting rams. They can also be used with balanced or unbalanced cylinders and pressurized systems.

Features

- Motor options of 24V 180 watt or 12V 405 watt and 24V 550 watt fan cooled motors.
- Adjustable pressure compensated flow control.
- Integral Relief valve
- Low power consumption for size.
- Quiet operation.
- Compact.
- Replaceable brushes.
- Service kits.
- Easy installation.
- Cylinder and hose kits supplied to suit.



Technical Data

Performance

Pump output	PC20	2.0 l/min
	PC25	2.5 l/min
Relief valve pressure setting		58 bar
Temperature rating minimum		-20°C
Temperature rating maximum		+55°C
Max ram size (10-12 sec. hard-over)		500cc

Electrical

	PC20 24	PC25 12	PC25 24
Motor voltage nominal	24Vdc	12Vdc	24Vdc
Motor output watts	180w	405w	550w
Max continuous current	11 amps	34 amps	23 amps

Motor connection	2 core flying lead
Solenoid coil connection	DIN 46350 plug
Solenoid coil power (continuous)	24 watt
Solenoid A energized	Pump to A port
Solenoid B energized	Pump to B port

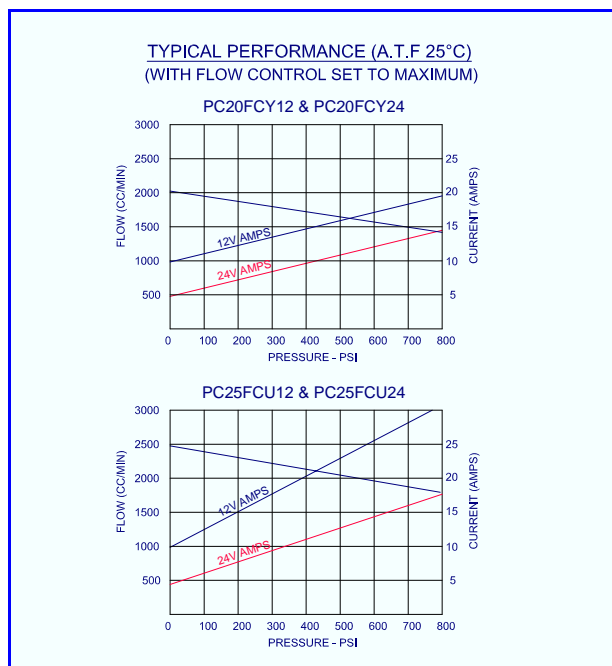
Materials

Body Aluminium	BS1490
Cast Iron	BS1452-250
Tank Aluminium	LM25TF
Seals	Nitrile & PTFE
Weight (PC20)	6.5 Kgs
Weight (PC25)	8.2 Kgs
Environmental protection	IP44

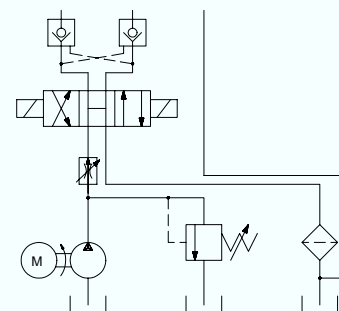
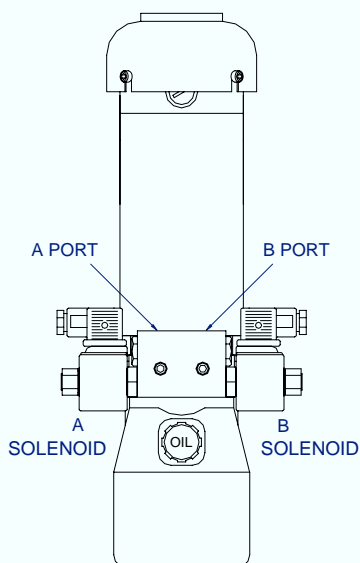
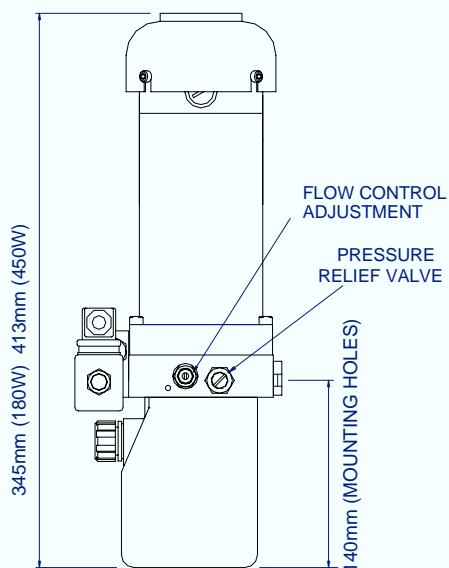
Recommended Oil

Mineral based hydraulic	ISO VG10 to ISO VG42
Ambient below 0 deg	ISO VG15
Ambient 0 to 35 deg	ISO VG22
Ambient above 35 deg	ISO VG32

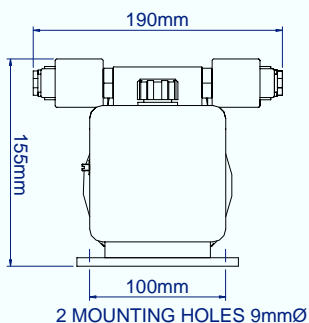
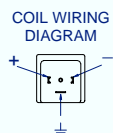
Tank capacity	0.75 litres
---------------	-------------



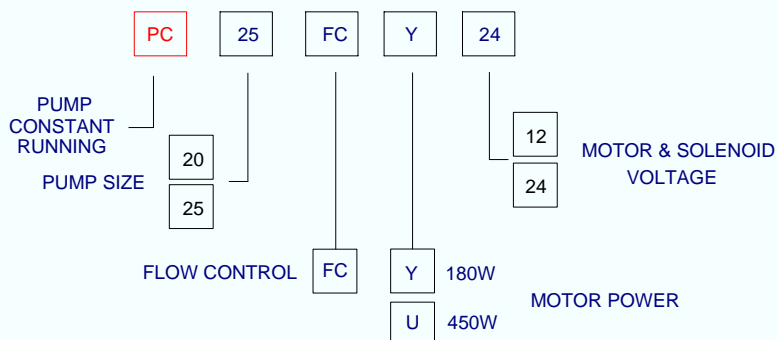
INSTALLATION DETAILS



FLYING LEAD - 2 CORE 2.5mm²
 1 METRE LONG
 RED LEAD POSITIVE - PRESSURE TO 'A' PORT



ORDER CODE



Hydraulic Projects Ltd
 Exeter Road

DAWLISH
 Devon EX7 0NH

Telephone: +44 (0) 1626 863634
 Fax: +44 (0) 1626 866283

E-mail: sales@hypro.co.uk
 Web site: www.hypro.co.uk