

P40 Monoblock Spool Valve 40 LPM

The P40 low profile monoblock spool valve has been specifically designed for use in mobile hydraulic applications. It is compact but has a flow capacity of 40 lpm at 250 bar. With quality by design, high specification materials, 100% production testing and a choice of series or parallel circuitry, the P40 valve is an economic alternative to currently available monoblocks. Supplied with an adjustable relief valve and levers as standard. The new valve is available with a range of spool options and centring mechanisms to suit a variety of mobile and industrial applications.



Description

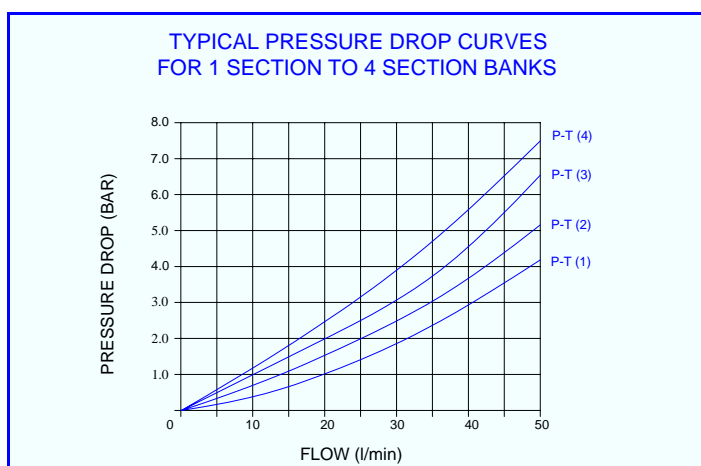
Compact monoblock construction with up to 7 spools with a common load check valve or 3 and 4 spools with individual load check valves to comply with machine safety requirements. Adjustable relief valves and universal levers.

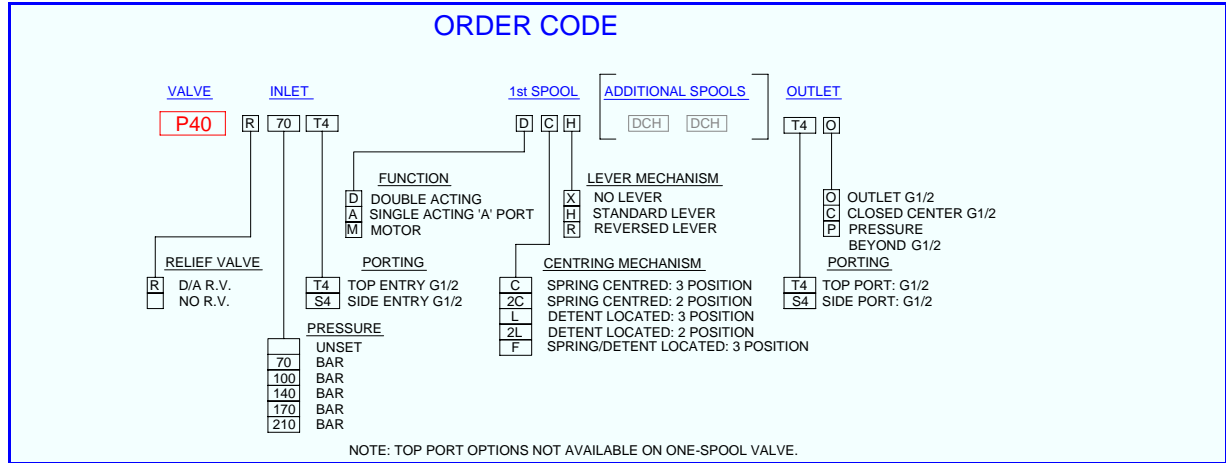
Application

Suited to mobile applications where space is limited and a cost effective valve is required with good flow characteristics. Used extensively in mobile, industrial and mechanical handling services.

Features

- Individually tested.
- Compact.
- 1 to 7 spools options.
- Universal lever.
- Cable option.
- Low profile.
- Individual load check option.
- Adjustable relief valve.
- Economic.
- Hydraulic pilot option.
- Pressure beyond option.





Technical Data

Performance

Rated flow	40 lpm
Maximum inlet pressure	250 bar
Maximum back pressure	10 bar
Temperature rating min	-20°C
Temperature rating max	+65°C
Spool leakage at 120 bar	<10cc/minute

Recommended Oil

Mineral based Hydraulic	ISO VG37
Minimum cleanliness	ISO DIS 4406 18/12

Materials

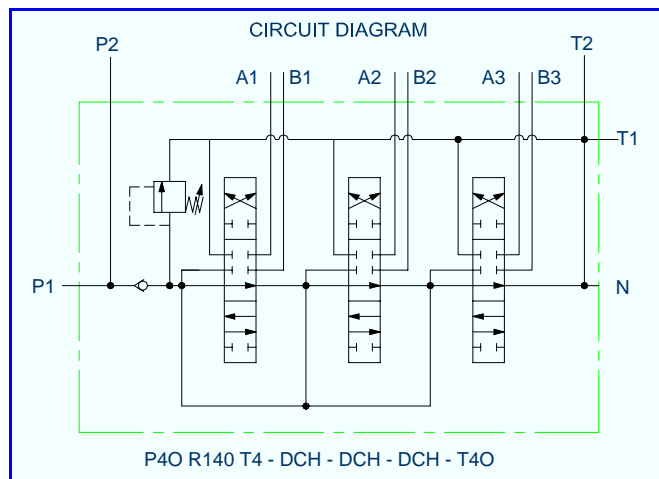
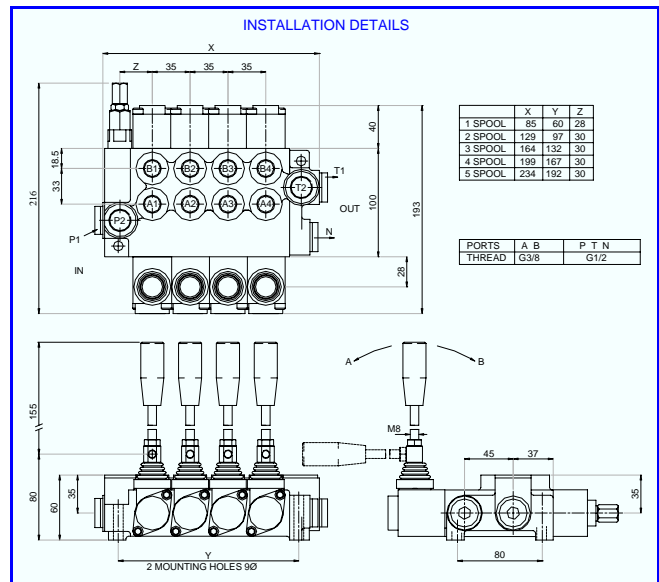
Body - cast iron	Grade 300 – phosphated
Spool – steel	Chrome plated
External plating	Zinc chromate
Lever housing	Aluminium
Seals	Nitrile

Weight

1 spool	2.8 kg
2 spool	4.2 kg
3 spool	5.6 kg
4 spool	7.2 kg
5 spool	8.4 kg
6 spool	9.6 kg
7 spool	10.8 kg

Ports

Service ports A & B	G 3/8
Inlet/outlet ports P & T	G 1/2
Pressure beyond N	G 1/2



Hydraulic Projects Ltd, Exeter Road, Dawlish, Devon EX7 0NH
 Telephone: +44 (0) 1626 863634. Fax +44(0) 1626 866283
 E-mail: enquiries@hypro.co.uk . Web site: www.hypro.co.uk