

## V1-40 CROSS LINE RELIEF VALVE

The V1-40 cross line relief valve is designed to be fitted onto the ports on the V1-40 sectional valve.

The valve relieves pressure from one service line to the other using only one relief valve cartridge.

This provides a cost effective means of protecting reversible motors or balanced cylinders.



### Description

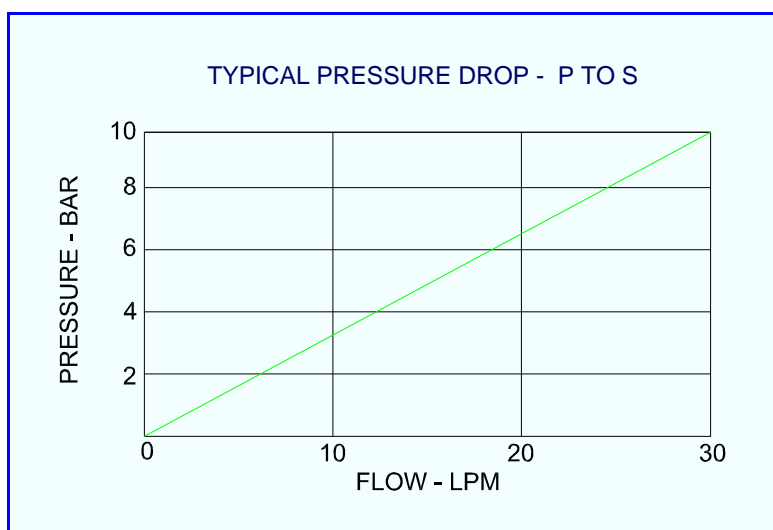
The V1-40 cross line relief valve is provided with banjo connections for assembly into the V1-40 sectional valve service ports. It provides pressure relief between the two services using one relief valve cartridge and reacts to whichever line reaches the preset pressure.

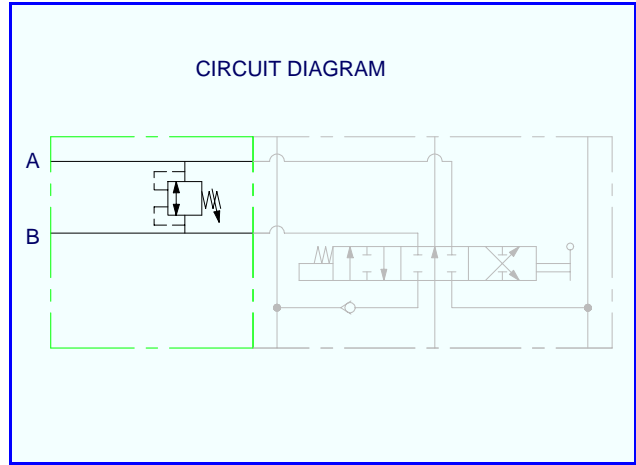
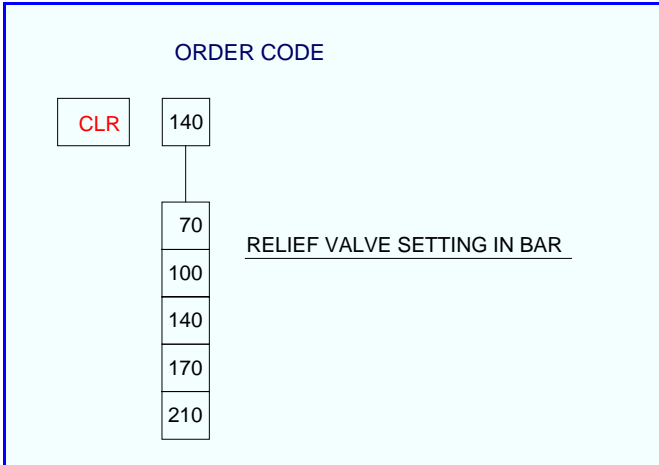
### Application

Used to protect from overpressure on a reversible motor or a balanced double acting cylinder. Typically used for a controlled slow down on hydraulic motors.

### Features

- Fast responding direct acting relief.
- Adjustable relief valve.
- Hardened piston.
- Long life relief valve.





## Technical Data

### Performance

<b>Rated flow</b>	<b>40 l/min</b>
<b>Maximum pressure</b>	<b>210 bar</b>
<b>Temperature rating: min</b>	<b>-20°C</b>
<b>Temperature rating: max</b>	<b>+65°C</b>
<b>Ports – male</b>	<b>G3/8</b>
<b>Relief re-seat</b>	<b>80% of setting</b>

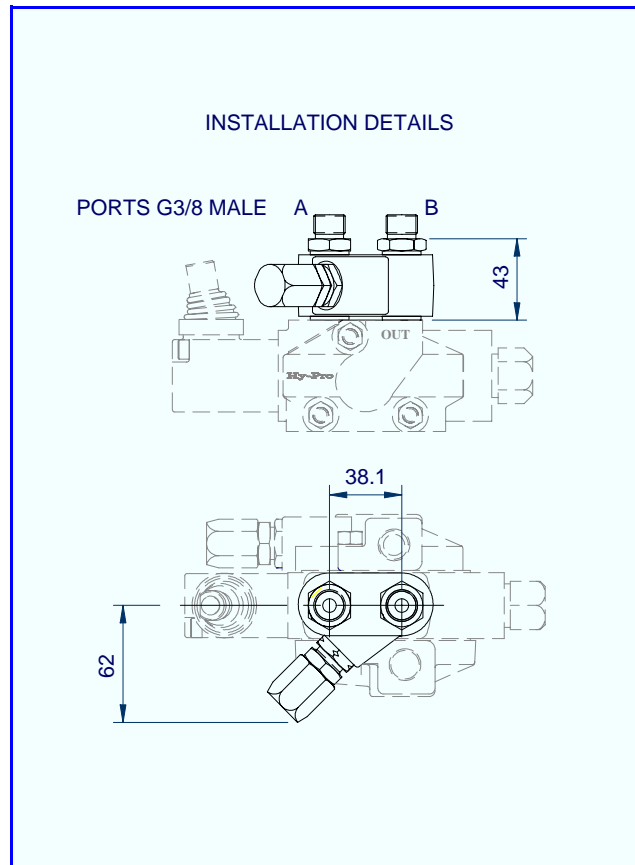
### Recommended Oil

<b>Mineral based hydraulic</b>	<b>ISOVG37</b>
<b>Filtration (minimum)</b>	<b>25 micron</b>

### Materials

<b>RV body – nitrile</b>	<b>NQ3</b>
<b>Piston – hardened</b>	<b>BC Standard 019</b>
<b>Cap – Zinc chromate</b>	<b>BS1706Zn3</b>
<b>Manifold – aluminium</b>	<b>BS1490</b>
<b>Banjo tightening torque</b>	<b>13.5 Nm</b>
<b>Seals – reciprocating</b>	<b>Viton</b>
<b>Seals - static</b>	<b>Nitrile</b>

<b>Weight</b>	<b>0.45Kgs</b>
---------------	----------------



**Hydraulic Projects Ltd**, Exeter Road, Dawlish, Devon EX7 0NH  
 Telephone: +44 (0) 1626 863634. Fax +44(0) 1626 866283  
 E-mail: enquiries@hypro.co.uk . Web site: www.hypro.co.uk