

V1-40 MID INLET SECTION

A mid inlet section is used to feed a second hydraulic supply into a valve chest. This enables two separate control assemblies to be build in to one valve chest. The inlet cover will feed sections before the mid inlet and sections following will be supplied from the mid inlet. An adjustable relief valve to protect the pump and a common tank port are included as standard.



Description

Valve intersection with an inlet port. This port, which is protected with its own relief valve, feeds sections down stream. The common tank port drains both up stream and down stream sections.

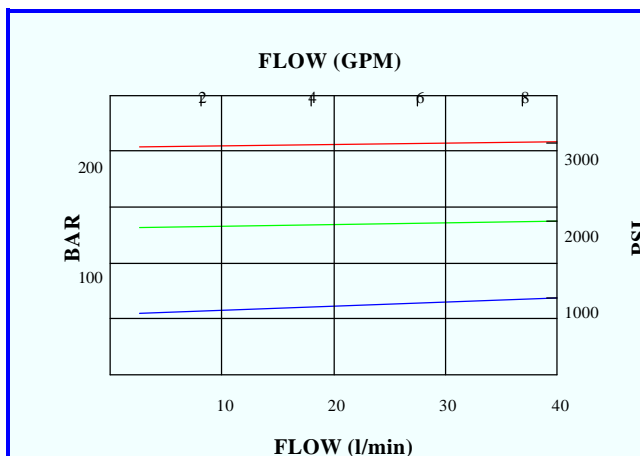
Application

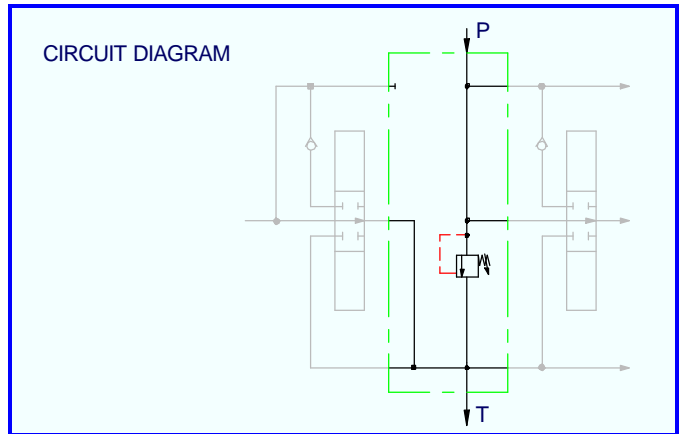
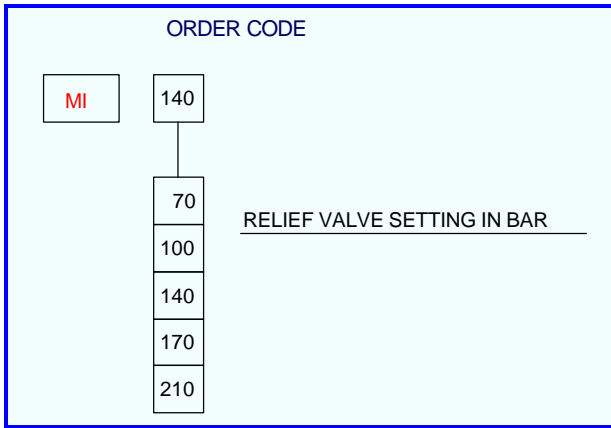
Used to combine two or more valve chests into one assembly, typically where space is limited. This also allows the control levers to be sited closer together.

Features

- Integral adjustable relief valve.
- Common tank port.
- Slim section.

Relief Valve Performance





Technical Data

Performance

Rated Flow	40 l/min
p at rated flow P to T	0.5 bar
Maximum pressure	250 bar
Maximum back pressure	25 bar
Temperature rating minimum	-20°C
Temperature rating maximum	+60°C
Inlet port	G 3/8
Outlet port	G 1/2

Recommended Oil

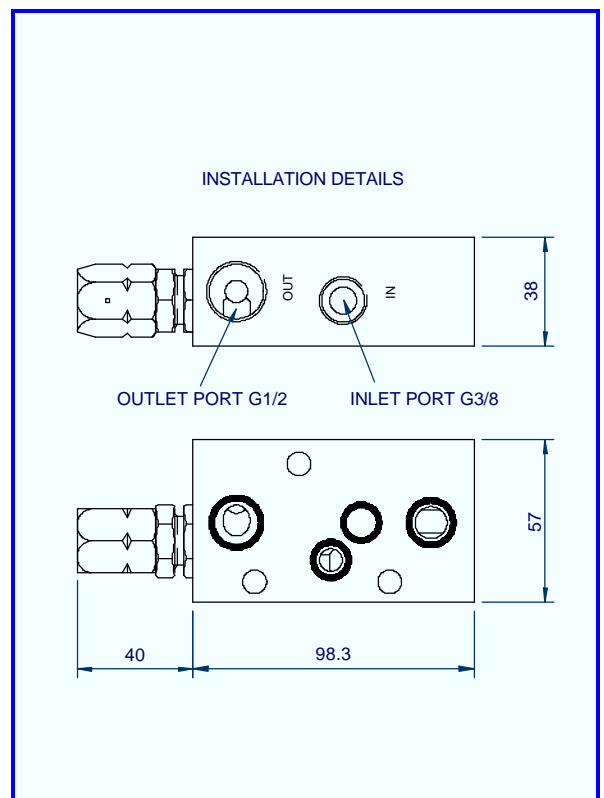
Mineral based hydraulic	ISO VG37
Filtration minimum	25 micron

Materials

Body – Aluminium	BS 1490
External plating – Zinc chromate	BS 1706 Zn3
Seals	Nitrile
Tie stud torque	13.5 Nm

Weight

MI R140	0.06 kg
---------	---------



Hydraulic Projects Ltd, Exeter Road, Dawlish, Devon EX7 ONH
 Telephone: +44 (0) 1626 863634. Fax +44(0) 1626 866283
 E-mail: enquiries@hypro.co.uk . Web site: www.hypro.co.uk