

# V1-40 SERIES CONNECTOR

Hy-Pro series adapter plates are designed to be fitted between two valve sections, connecting in series the actuators that they control. Series adapter plates are often used to synchronize two hydraulic motors where the return oil from one is fed to the inlet of the second.

The series adapter plate effects only the valve sections immediately upstream and downstream of its position in the valve bank. Other sections remain connected in parallel. When using the series adapter plate, consideration must be given to upstream sections. This is because the normally open tank gallery in the valve bank is pressurized when the series connected actuators are on load.



Special provision has also to be made for ancillary valves when used with series-connected valve banks. In such cases, customers are advised to discuss their circuit design with Hydraulic Projects.

## Description

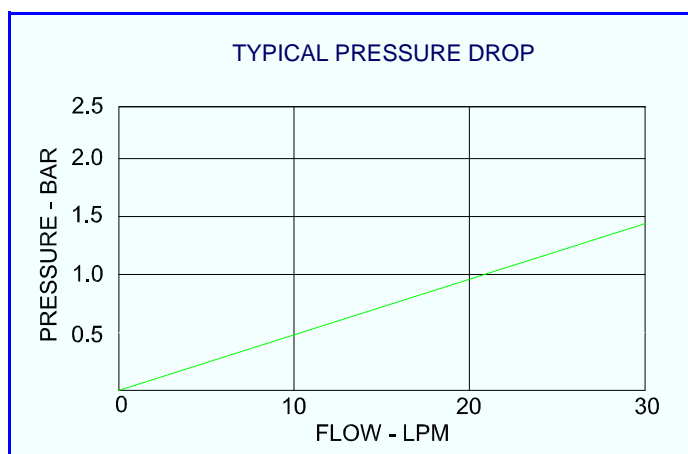
This intersection connects upstream tank galleries to the pressure galleries of the down stream section enabling the oil to power a second service.

## Application

Used where two or more services are required to operate simultaneously with differing loads. Often used to synchronize two hydraulic motors.

## Features

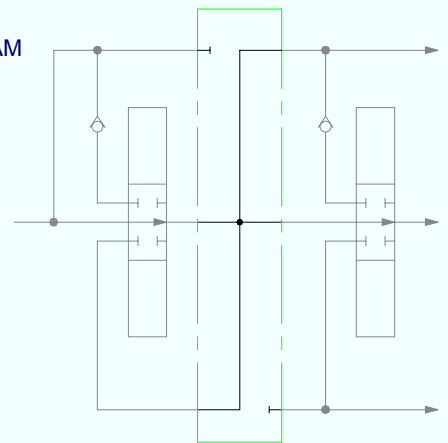
- Used with standard sections.



ORDER CODE

SC

CIRCUIT DIAGRAM



## Technical Data

### Performance

Rated flow	40 l/min
$\Delta p$ at rated flow P to T	0.8 bar
Temperature rating minimum	-20°C
Temperature rating maximum	+65°C

### Recommended Oil

Mineral based hydraulic	ISO VG37
Filtration (minimum)	25 micron

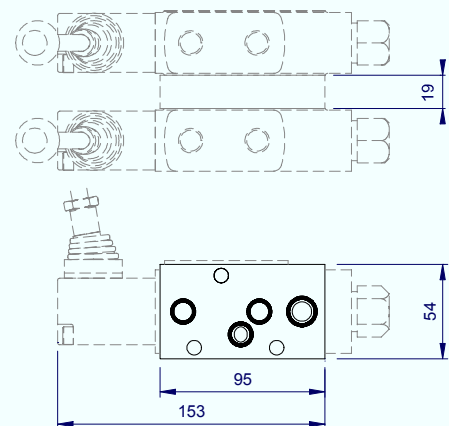
### Materials

Aluminium	BS1490
-----------	--------

### Weight

0.23kg

INSTALLATION DETAILS



**Hydraulic Projects Ltd**, Exeter Road, Dawlish, Devon EX7 ONH  
Telephone: +44 (0) 1626 863634. Fax +44(0) 1626 866283  
E-mail: [enquiries@hypro.co.uk](mailto:enquiries@hypro.co.uk) . Web site: [www.hypro.co.uk](http://www.hypro.co.uk)