

V3-100 FLOW CONTROL INTERSECTION



A pressure compensated meter-in type flow control which can be included in a V3-100 valve assembly. The regulated flow is supplied via the pressure gallery to 'down stream' sections, while 'up stream' are unaffected. The flow can be continuously adjusted using a knob or preset with a screw and lock nut. A coarse metering needle is also available as is a meterized flow control valve.

Description

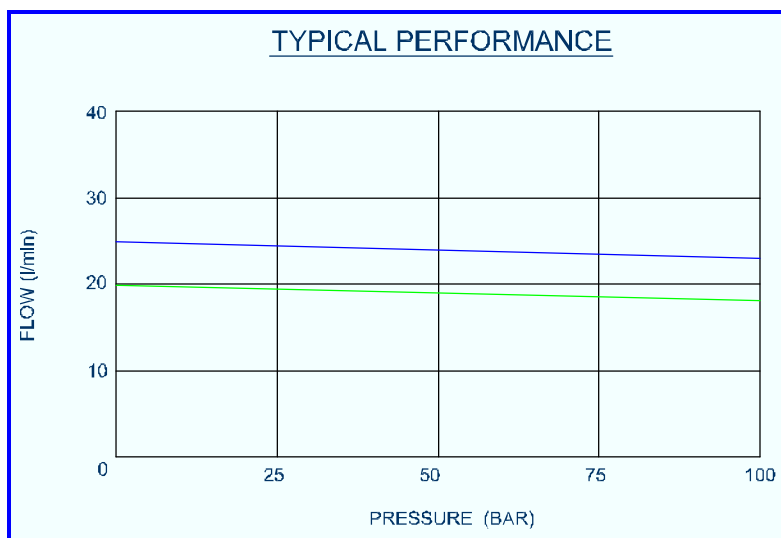
A meter-in type flow control intersection, which regulates flow to 'down stream' sections only. Pressure compensated, it returns the excess flow to the tank gallery. This ensures consistent control and minimum heat generation.

Application

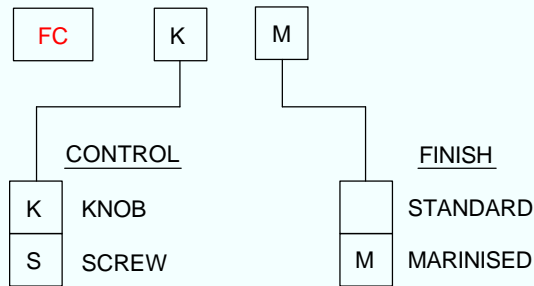
To be used in applications requiring precise speed control in addition to stop, start and reverse functions of the spool valve, such as winches and industrial conveyors. Can also be used to control the speed of cylinders.

Features

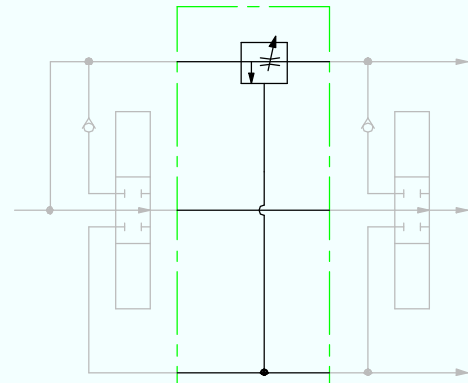
- Minimum heat generation
- Pressure compensated
- Adjustable or pre-set
- Screw or knob adjusted
- Solenoid two speed option
- Range of metering characteristics
- Limited max flow option
- Hardened components for long life



ORDER CODE



CIRCUIT DIAGRAM



Technical Data

Performance

Rated flow	100 l/min
Adjustable range	0-100 l/min
P Inlet to outlet at 40 l/min	1.0 bar
P Inlet to service	6.9 bar
Maximum pressure	250 bar
Maximum back pressure	25 bar
Temperature rating minimum	-20°C
Temperature rating maximum	+60°C

Recommended Oil

Mineral based hydraulic	ISO VG37
Filtration minimum	25 micron

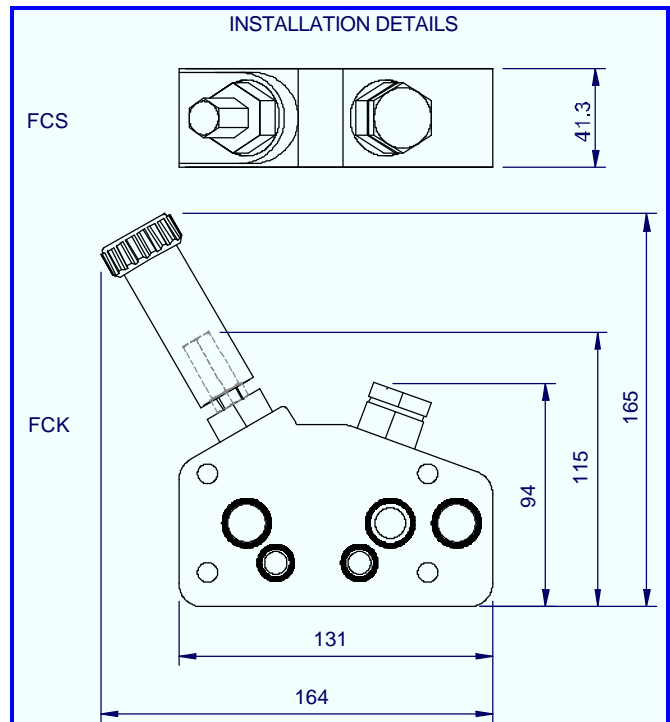
Materials

Body – Aluminium	BS 1490
Needle – Stainless Steel	EN58AM
External plating – Zinc chromate	BS 1706 Zn3
Seals	Nitrile/ PTFE
Tie stud torque	13.5Nm

Weight

FCK	1.2 kg
-----	--------

INSTALLATION DETAILS



Hydraulic Projects Ltd, Exeter Road, Dawlish, Devon EX7 0NH
 Telephone: +44 (0) 1626 863634. Fax +44(0) 1626 866283
 E-mail: enquiries@hypro.co.uk . Web site: www.hypro.co.uk