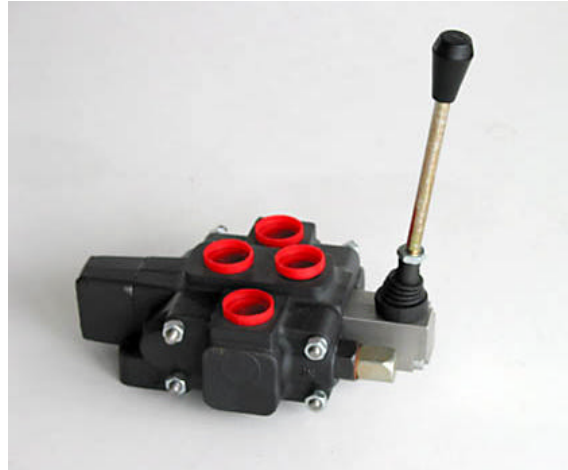


V3-100 G3/4 MANUAL SPOOL VALVE 100 LPM



The V3-100 sectional spool valve is one of the most compact 100 l/min valve available. Designed for pressures up to 250 bar the valve is available with two, three and four position spool control options and a range of spool types. The lever mechanism is a pressure die casting which totally encloses the spool for added protection. A range of optional ancillary valves are also available to be able to match the requirements of the most complicated and demanding circuits.

Description

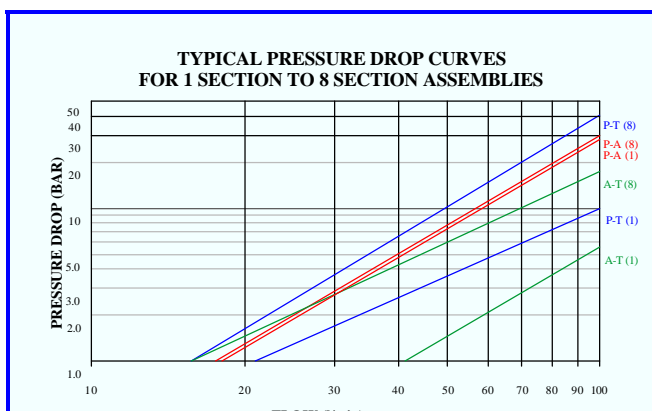
A compact 100 litre per minute valve that can be lever or cable operated. Suitable for open and closed circuits. Available with a range of metered spools and two, three and four position spool options. The main relief valve is pilot operated to give precise pressure control and good repeatability. A range of ancillary valves are available to complement the sectional valve.

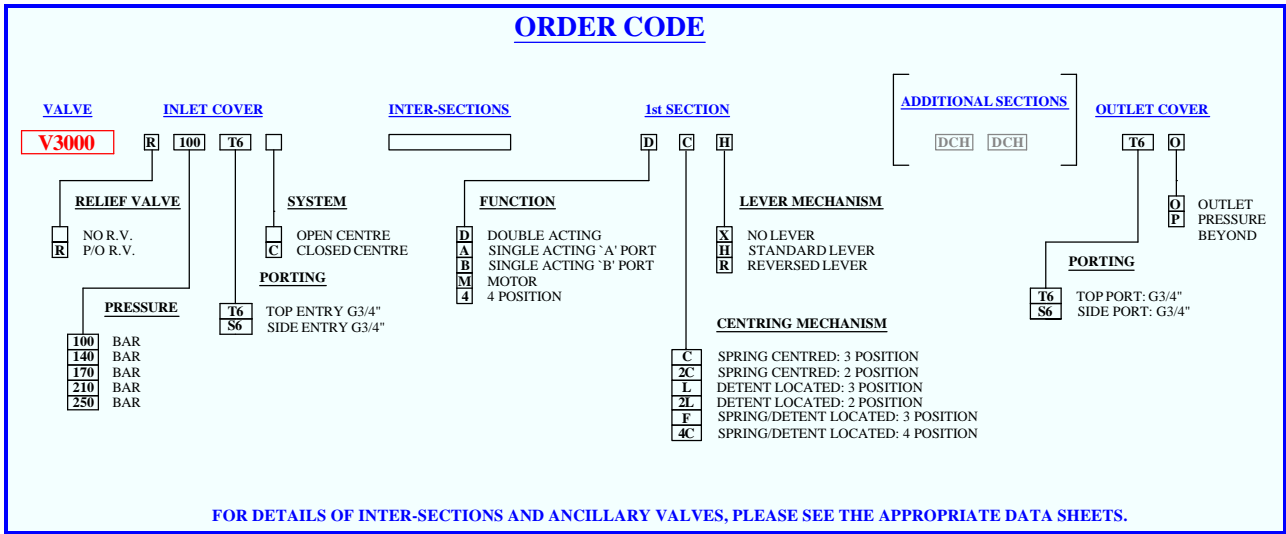
Application

Designed to be used in many applications requiring a compact, rugged sectional spool with excellent metering characteristics. Accepted in the industrial, mobile, marine winch and agricultural markets for its flexibility and reliability. Valves can be assembled to control a variety of hydraulic circuits using the extensive range of ancillary options

Features

- Excellent metering characteristics.
- Good load holding.
- Integral load check valve.
- Open and closed centre option.
- Adjustable, pilot operated relief valve.
- Robust enclosed lever mechanism.
- Range of ancillary valves.
- 100% production testing.
- Marinization option.





Technical Data

Performance

Rated Flow	100 l/min
P inlet to outlet @ 100 l/min	3.6 bar
Maximum pressure, service port	250 bar
Maximum pressure, inlet port	250 bar
Maximum back pressure, outlet port	35 bar
Temperature rating: minimum	-20°C
Temperature rating: maximum	+65°C
Spool leakage, 210 bar @ 20°C	< 6cc/min
Spool leakage, 4 position	< 8cc/min

Recommended Oil

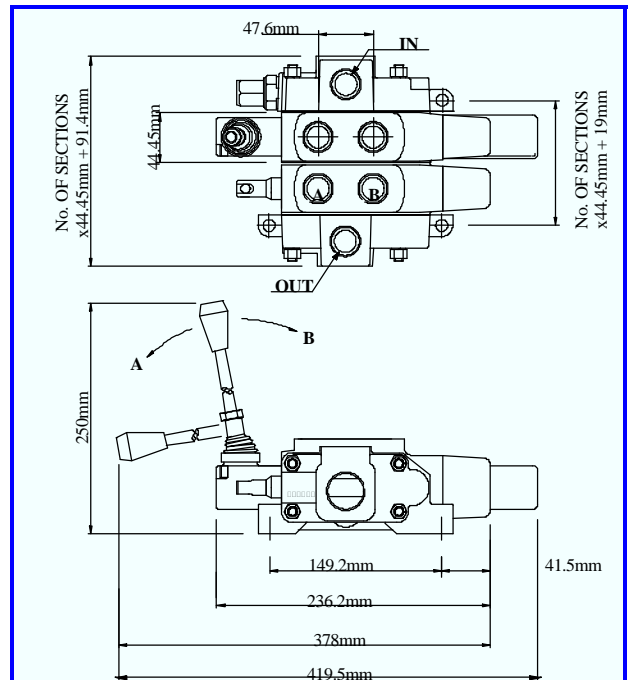
Mineral based hydraulic	ISOVG37
Filtration (minimum)	25 micron

Materials

Body – cast iron	BS1452-250
End covers – aluminium	BS1490
External plating – Zinc Chromate	BS1706Zn3
External plating – Nitrotech	NQ3
Tie studs (M8)	EN8
Tie stud torque	13.5 Nm
Reciprocating seals	PTFE/Viton
Static	PTFE/Nitrile

Weight

Sections	2.9 Kgs
End covers (pair)	1.45 Kgs
Lever force – standard lever	2.2 to 3.8 Kgs



Hydraulic Projects Ltd, Exeter Road, Dawlish, Devon EX7 ONH UK
 Telephone: +44 (0) 1626 863634. Fax +44 (0) 1626 866283
 E-mail: enquiries@hypro.co.uk . Web site: www.hypro.co.uk