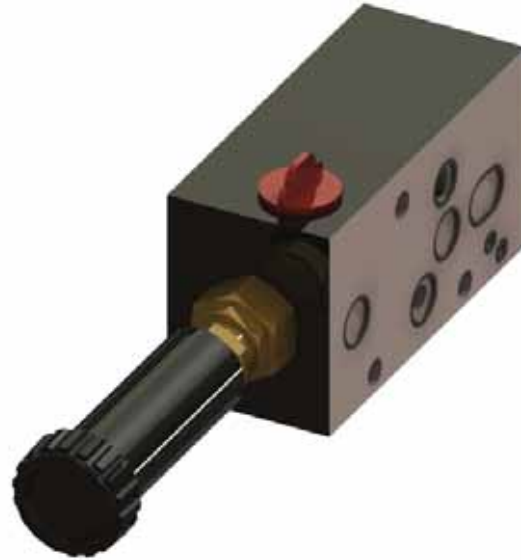


## V4 INTERSECTIONS

V4\_FDd

### FLOW DIVIDER

The Hy-Pro flow divider inter-section allows two hydraulic circuits to be built into one valve assembly. Flow is fed directly to the section. The adjustable priority flow is fed to the left hand sections and the remaining flow to the right hand sections, thus allowing two circuits to be run simultaneously and independently. A series link can be incorporated in the flow divider section, re-combining the flow and feeding the full flow to the right hand sections, whilst maintaining priority flow to the left hand sections. The pressure compensated flow divider can be supplied with either a graduated knob for continuous adjustment or preset with a lock nut.



#### Description

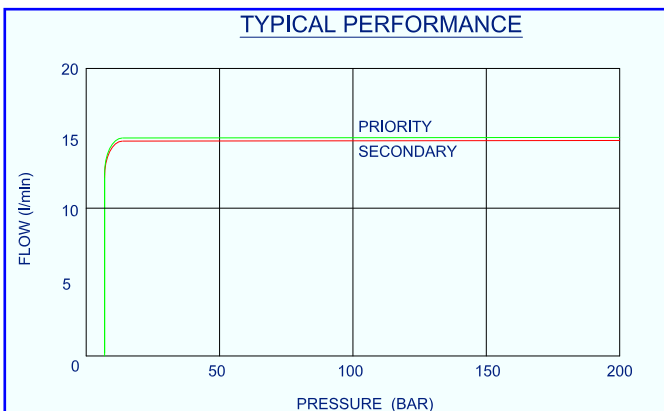
Adjustable flow divider cartridge housed in a manifold. The flow divider continuously senses the pressure drop across the priority control orifice, maintaining the selected priority flow. The adjustable priority flow is unaffected by variable pump delivery or pressure changes in either priority or secondary circuits.

#### Application

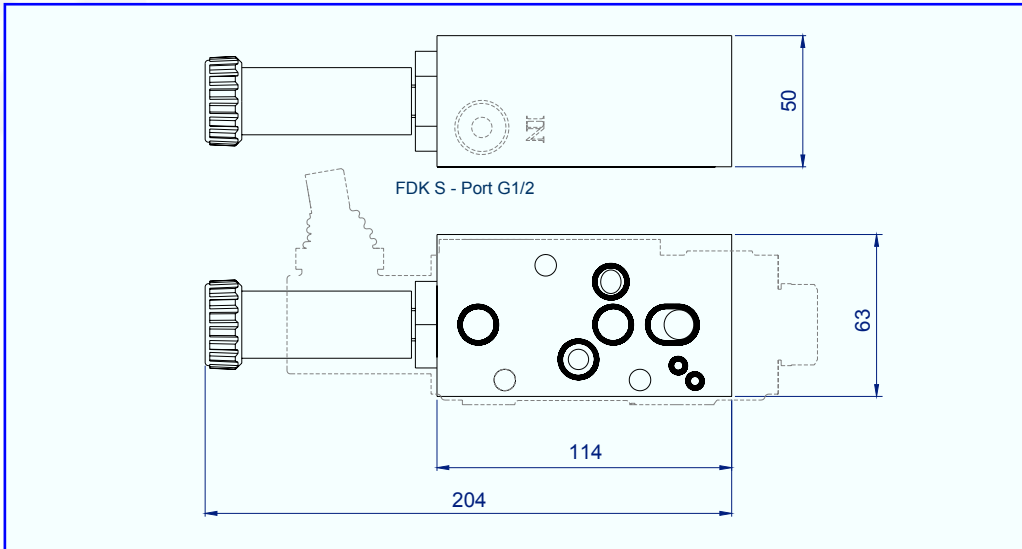
Used in applications requiring a single pump to drive an actuator and a motor, or a pair of motors simultaneously, with variable loads. Typically conveyor motors used in road surface treatment and feeder wagons for the agricultural sector.

#### Features

- Variable priority flow.
- Pressure compensated.
- Compact cartridge design.
- Graduated knob.
- Series link option.
- Screw and locknut option
- Hardened and ground components for long life.



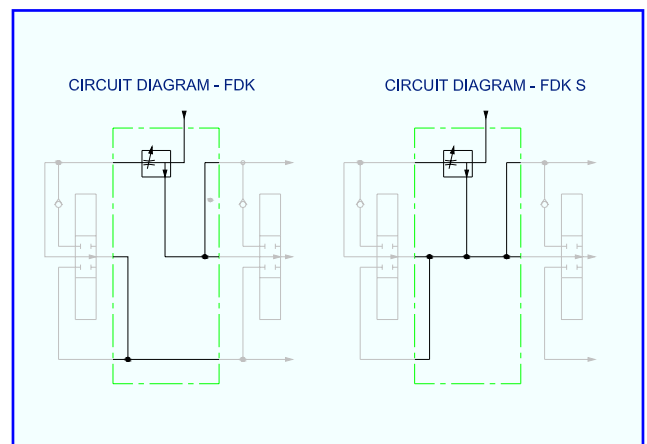
## V4 INTERSECTIONS



### Flow Divider Specification

#### Performance

Rated flow	40 L/minute
Priority flow maximum	36 L/minute
Priority flow minimum	0 L/minute
$\Delta P$ inlet to service	6.9 bar
Maximum pressure	250 bar
Temperature rating minimum	-20°C
Temperature rating maximum	+65°C



#### Recommended Oil

Mineral based hydraulic	ISO VG37
Filtration (minimum)	25 micron

#### Materials

Body – aluminium	BS 1490
Needle – stainless steel	EN58AM
External protection	Zinc chromate
	BS 1706 Zn3
	Nitrotech NQ3
	Nitrile/PTFE

#### Seals

#### Weights

FDK	0.9 Kg
-----	--------

