

## V4 INTERSECTIONS

V4\_MId

### MID-INLET SECTION

A mid inlet section is used to enable two separate control valves to be built into one assembly. The first valve is fed from the inlet cover whilst the second is fed by the mid-inlet. An adjustable relief valve is included to protect the pump supplying the sections fed by the mid-inlet. The mid inlet section combines elements of our standard inlet and outlet covers thus permitting a very compact installation with less hoses and connections than two separate valve banks.



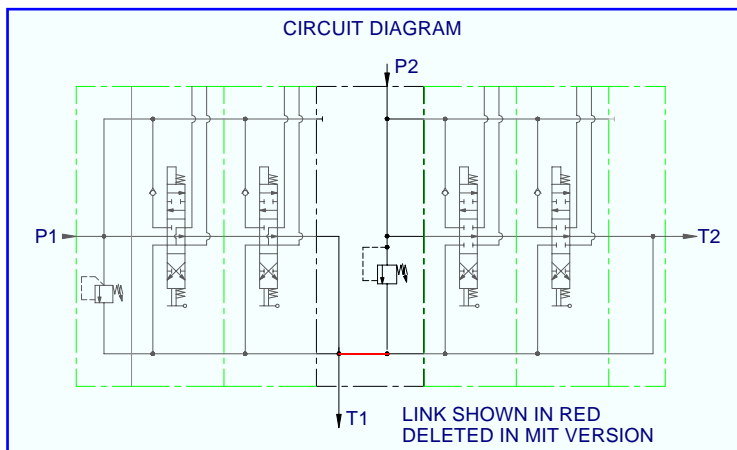
Options are available to have the outlet flow from both sides of the assembly combined into one outlet (MI) or as 2 separate outlets if the combined return flow is greater than 60 lpm (MIT). more valve assemblies into one bank, typically where space is limited. This also allows the control levers to be sited closer together.

### Application

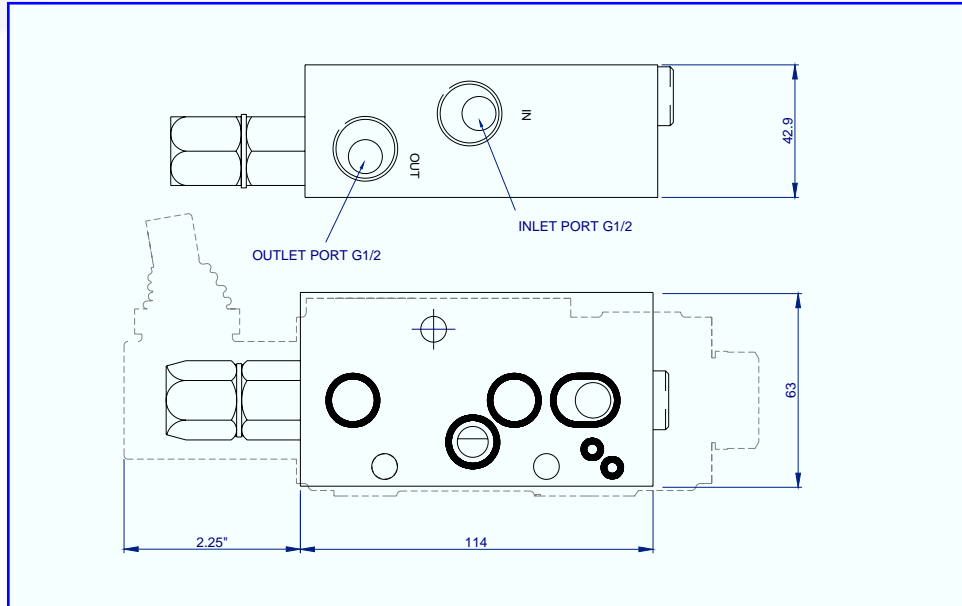
Used to combine two or more valve assemblies into one bank, typically where space is limited. This also allows the control levers to be sited closer together.

### Features

- Integral adjustable relief valve.
- 2 outlet port options.
- Anodised option
- Compact section.



## V4 INTERSECTIONS



### Mid-Inlet Specification

#### Performance

Rated Flow	40 l/min
$\Delta p$ at rated flow P to T	0.5 bar
Maximum pressure	250 bar
Maximum back pressure	25 bar
Temperature rating minimum	-20°C
Temperature rating maximum	+60°C
Inlet port	G 1/2
Outlet port	G 1/2

#### Recommended Oil

Mineral based hydraulic	ISO VG37
Filtration minimum	25 micron

#### Materials

Body	Aluminium BS 1490
Relief Valve	Zinc chromate BS 1706 Zn3 Nitrotec NQ3
Seals	Nitrile

#### Weight

MI RXXX	0.6 kg
---------	--------

#### ORDER CODE

