

V4 CONTROL

V4_RLd

ROTARY LEVER

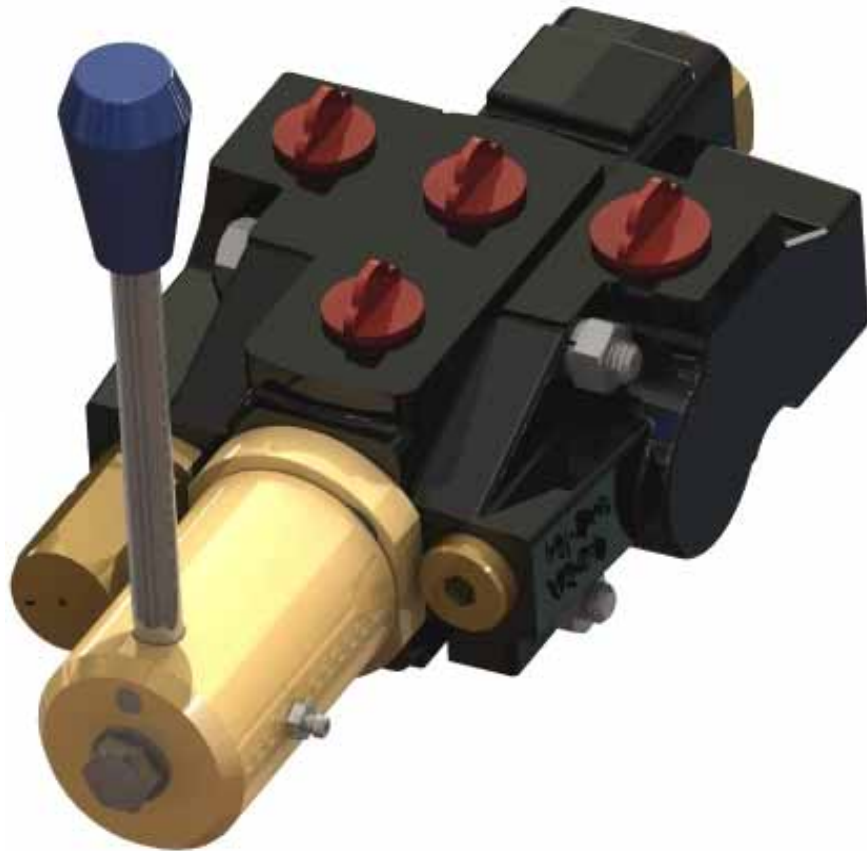
Description

The Hy-Pro rotary lever has been developed specifically to enable the operator precise control of motors and cylinders in the fishing and other industries.

The lever rotates through a $\pm 65^\circ$ arc and operates a scroll which converts the rotary action of the lever into axial movement of the spool.

The mechanism has a friction detent feature which positively holds the spool in neutral or will maintain the selected position when operated.

Because of the geometry of the lever it is not possible to include it in multi-section valves but it is retro-fitable to existing V4 single section assemblies.



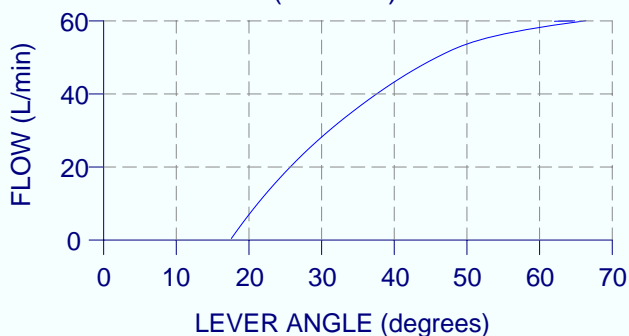
Application

Used extensively in the forestry and fishing industry to control the speed of conveyors and winches.

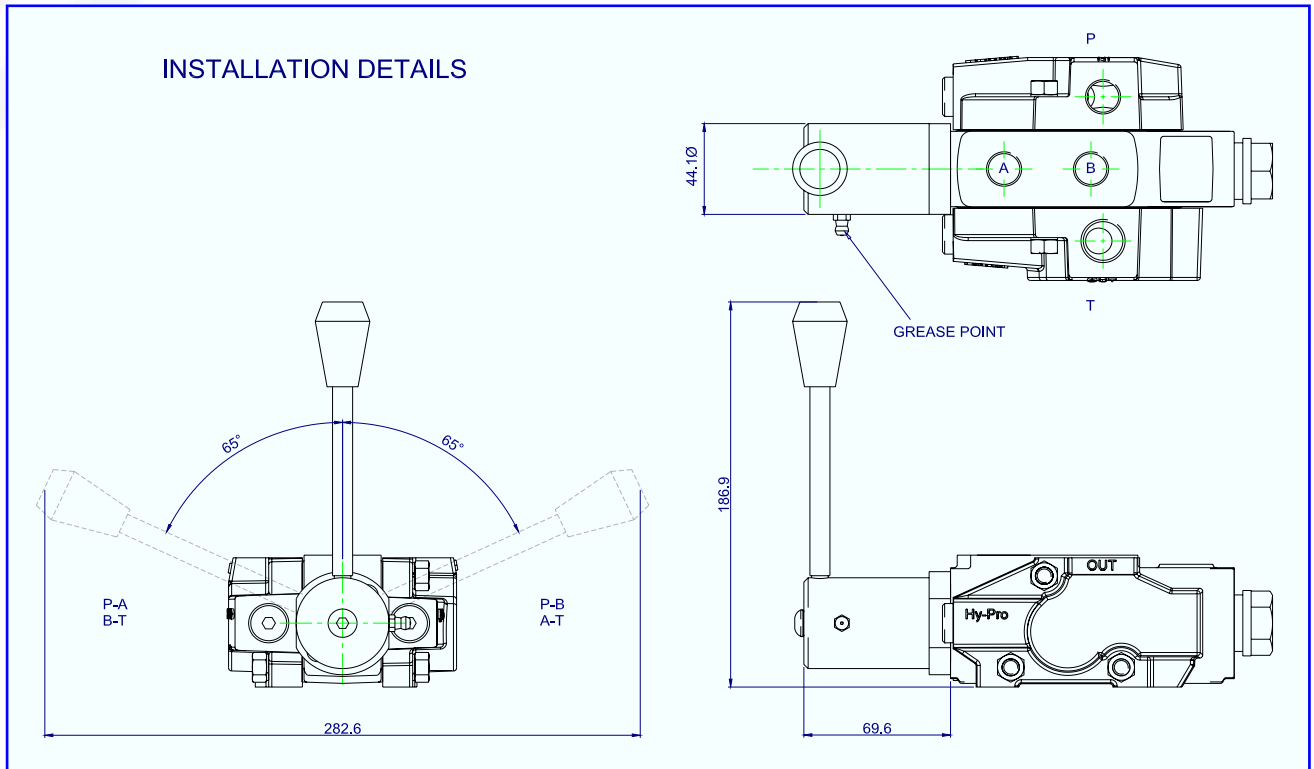
Features

- $\pm 65^\circ$ movement.
- Compact design.
- Spool options.
- Neutral detent.
- Friction hold.
- Robust mechanism.
- Toughened components.
- Bronze Body and cast iron construction.
- Retro fit-able.

TYPICAL METERING CHARACTERISTIC
(No load)



V4 CONTROL



Rotary Lever Specification

Performance

Refer to graph
Lever movement $\pm 65^\circ$

Materials

Body internal Cast Iron BS 1452
Body external Manganese bronze CZ114

Friction/detent Steel Nitrotech NQ3

Weight 4.9 kg
(Complete assembly
as per drawing)

ORDER CODE

