

# V5-60 ELECTRICALLY OPERATED FLOW CONTROL



The FCE electrically operated flow control has been added to the V5-60 spool valve range. This section enables the user to vary the flow in a bank of valves by remotely varying the voltage to the flow control solenoid. The priority type pressure compensated flow control varies the flow available to the down stream sections in the valve chest. If used in conjunction with the V5-60 solenoid valves complete remote control can be achieved electronically. By using the V5-60 micro switch on a manual section to give a pre-set voltage to the flow control solenoid, a differing flow can be obtained from each section.

When used in conjunction with a proportional driver plug, the control is obtained with a 10k  $\Omega$  potentiometer or 0 to 10V DC external signal.

## Description

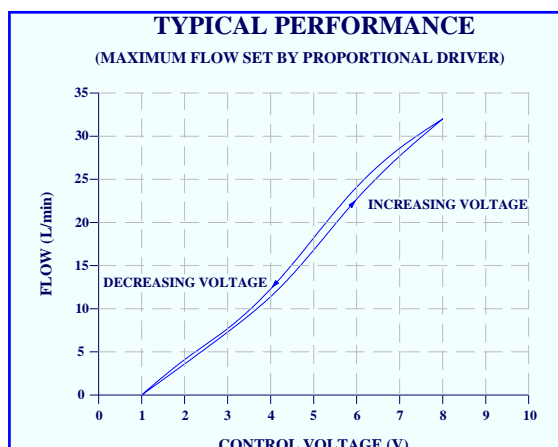
A pressure compensated, meter in, type flow control with a solenoid controlled metering orifice. The orifice is adjusted by varying the power to the coil. When used with a proportional driver plug the orifice can be adjusted with a 10K  $\Omega$  potentiometer or 0 to 10V DC signal from control circuitry.

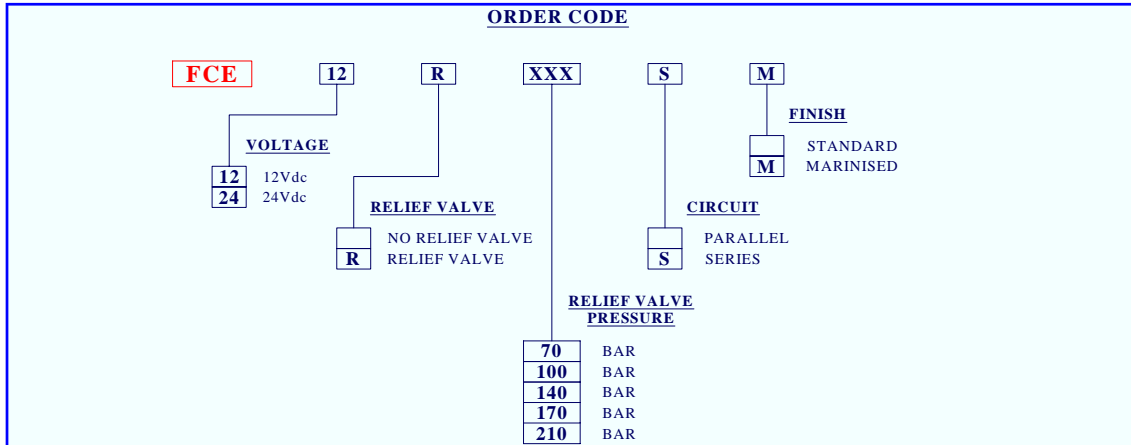
## Application

Used to control the speed of hydraulic motors or cylinders remotely. (Electronically controlled). Used extensively in the mobile industry to control the speed of conveyors and also in the recovery industry to control the speed of winches.

## Features

- Fast response 0 to max.
- Low hysteresis.
- Good linearity.
- Pressure compensated.
- Proportional driver plug option.
- Relief valve.
- Series connection.





## Technical Data

### Performance

Rated flow	60 l/min
Adjustable range	0–60 l/min
$\Delta p$ inlet to outlet at 60 litres/min	0.9 bar
$\Delta p$ inlet to service	6.9 bar
Maximum pressure	210 bar
Maximum back pressure	25 bar
Temperature rating minimum	0°C
Temperature rating maximum	+ 60°C

### Electrical

Coil voltage nominal	12 or 24V DC
Coil power	38 watt
Protection	IP65
Connection	DIN 43650
Cable $\varnothing$ (not supplied)	6 - 8mm
Proportional driver plug	XPRO 932

### Recommended Oil

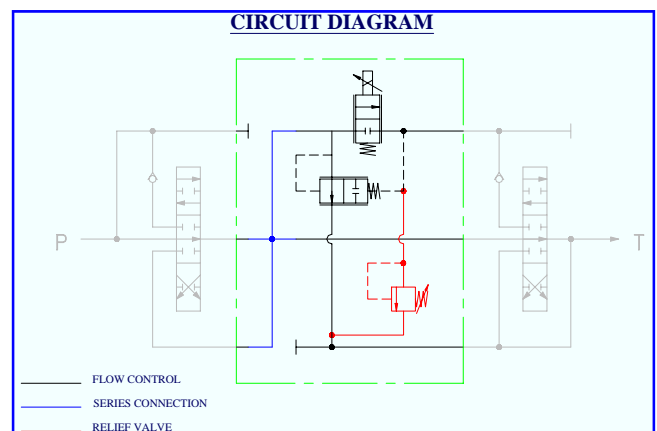
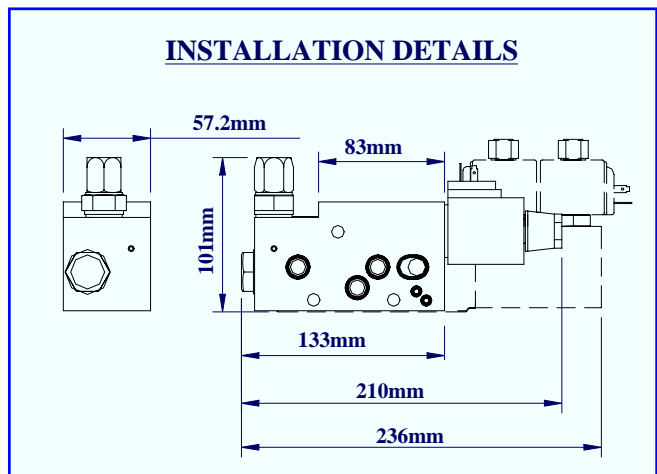
Mineral based hydraulic	ISO VG37
Filtration minimum	25 micron

### Material

Body – Aluminium	BS 1490
External plating – zinc chromate	BS 1706 Zn3
Seals	Nitrile/PTFE
Tie stud torque	13.5 Nm

### Weight

FCE	1.3 Kg
-----	--------



**Hydraulic Projects Ltd**, Exeter Road, Dawlish, Devon EX7 ONH UK  
 Telephone: +44 (0) 1626 863634. Fax +44 (0) 1626 866283  
 E-mail: enquiries@hypro.co.uk . Web site: www.hypro.co.uk