

V5-60

ELECTRICALLY OPERATED FLOW DIVIDER



The Hy-Pro electrically operated flow divider section allows two hydraulic circuits to be built into one valve assembly and the flow to each circuit adjusted remotely. Oil is fed directly to the section, the priority flow is fed to the left hand sections and the remaining secondary flow to the right hand sections, thus allowing two circuits to be run simultaneously and independently. A feature of the valve is the internal series link which recombines the priority flow so that full secondary flow is available to the right hand sections whilst maintaining the priority flow.

Description

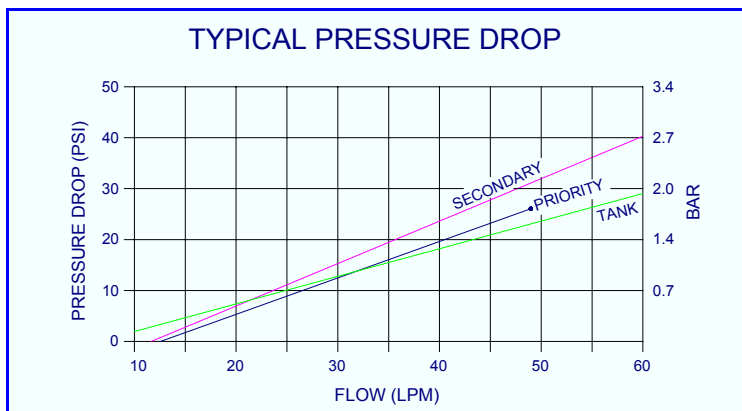
Solenoid controlled flow divider cartridge housed in a manifold. The flow divider continuously senses the pressure drop across the priority control orifice, maintaining the selected priority flow. The adjustable priority flow is unaffected by variable pump delivery or pressure changes in either priority or secondary circuits. Control is via a proportional driver cartridge and 10K Ω Potentiometer.

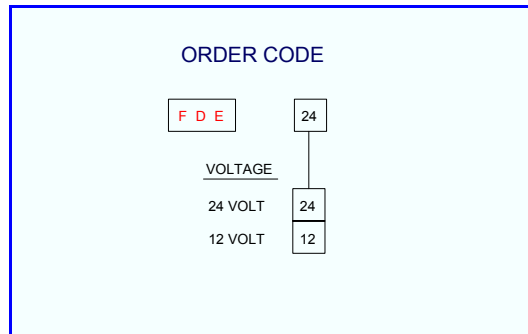
Application

Used in applications requiring a single pump to drive an actuator and a motor, or a pair of motors simultaneously, with variable loads. Typically conveyor motors used in road surface treatment and feeder wagons for the agricultural sector.

Features

- Variable priority flow.
- Pressure compensated.
- Series link option.
- Can be used with manual and solenoid valve sections
- Hardened and ground components for long life.
- Proportional control driver





Technical Data

Performance

Rated flow	60 L/minute
Priority flow range	0-46 L/minute
Secondary flow range	0-60 L/minute
ΔP inlet to tank 40 lpm	2.0 bar
ΔP inlet to priority service 40 lpm	1.6 bar
ΔP inlet to secondary service 40 lpm	2.0 bar
Maximum pressure	250 bar
Temperature rating minimum	-20°C
Temperature rating maximum	+65°C

Recommended Oil

Mineral based hydraulic	ISO VG37
Filtration (minimum)	25 micron

Materials

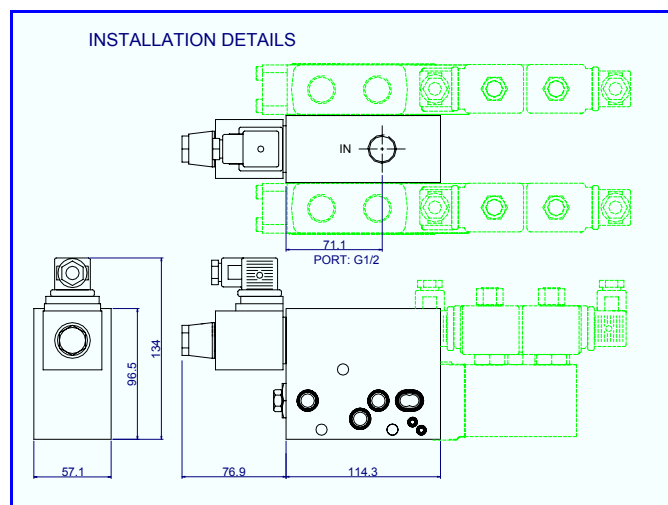
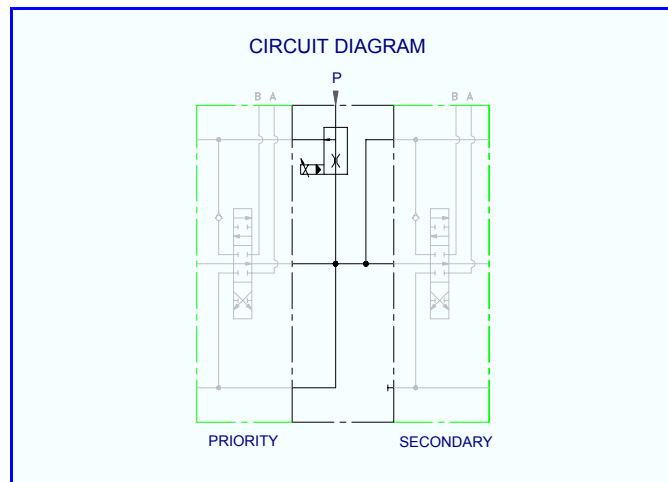
Body – aluminium	BS 1490
Cartridge – steel nitrotec	NQ3
– steel case hardened	BS 0.19
Seals	Nitrile/PTFE
Tie stud torque	13.5 Nm

Weights

FDE 12 & 24	1.5 Kg
-------------	--------

Electrical

Coil Power	38 watts
Protection	IP65
Connection	DIN 43650
Proportional Driver	XPRO932



Hydraulic Projects Ltd, Exeter Road, Dawlish, Devon EX7 ONH, UK
 Telephone: +44 (0) 1626 863634. Fax +44 (0) 1626 866283
 E-mail: enquiries@hypro.co.uk . Web site: www.hypro.co.uk