

V5 INTERSECTIONS

SERIES CONNECTOR

Hy-Pro series connectors are designed to be fitted between two valve sections, connecting in series the actuators that they control. Series connectors are often used to synchronize two hydraulic motors where the return oil from one is fed to the inlet of the second.

The series connector effects only the valve sections immediately upstream and downstream of its position in the valve bank. Other sections remain connected in parallel. When using the series connectors, consideration must be given to upstream sections. This is because the normally open tank gallery in the valve bank is pressurized when the series connected actuators are on load. If this is a problem specially designed inlet covers are available which contain a separate outlet port for the relief valve bypass flow.



Special provision has also to be made for ancillary valves when used with series-connected valve banks. In such cases, customers are advised to discuss their circuit design with Hy-Pro.

Description

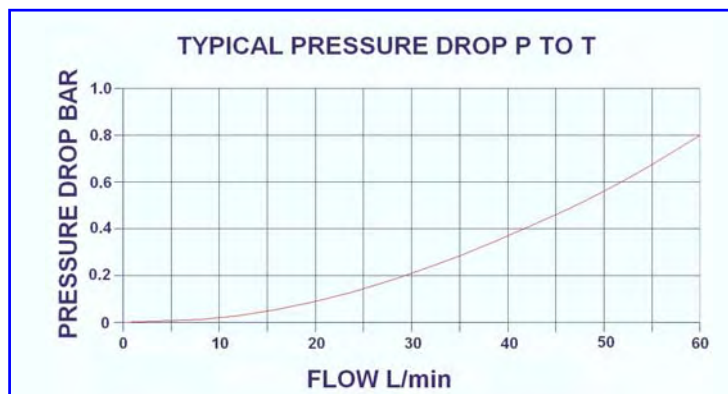
This intersection connects the up stream tank galleries to the pressure galleries of the down stream section enabling the flow to power a second service .

Application

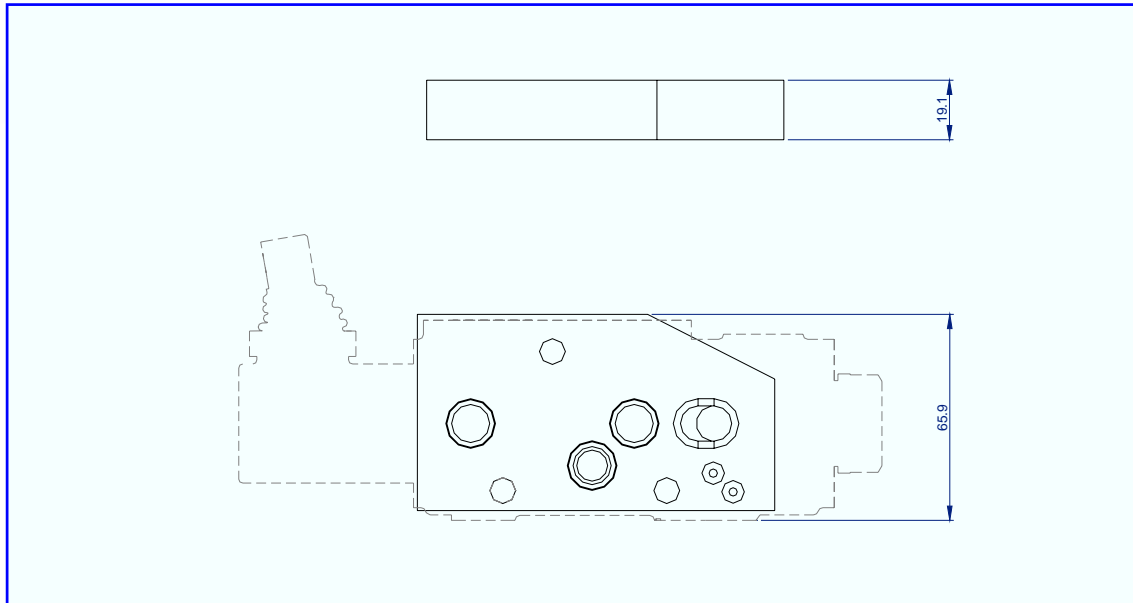
Used where two or more services are required to operate simultaneously with differing loads. Often used to synchronize two hydraulic motors.

Features

- Used with standard sections.
- Converts both manual and solenoid sections.
- Anodised option



V5 INTERSECTIONS



Series Connector Specification

Performance

Rated flow	60 l/min
Max pressure	250 bar
Δp at rated flow P to T	0.8 bar
Temperature rating minimum	-20 °c
Temperature rating maximum	+65 °c

Recommended Oil

Mineral based hydraulic	ISO VG37
Filtration (minimum)	25 micron

Materials

Aluminium	BS1490
-----------	--------

Weight

0.3kg

