

## V5 ANCILLARIES

### SERVICE LINE RELIEF & ANTI- CAVITATION

The V5 service line relief valve is used to limit the pressure in individual service lines and provide anti-cavitation protection in circuits with overrun situations to maintain oil in the actuators.

The valve is mounted onto the service port face of a "Z" type valve section using four cap screws. The body has a cavity for each service line. This will accept one of four cartridges, relief, anti-cavitation, relief and anti-cavitation or a blanking cartridge.

Relief valves are pre-set by Hy-Pro, but are fully adjustable retrospectively using the socket screw located under the cap nut. The Hy-Pro service line relief valves and anti-cavitation valves can be used on manual, cable and solenoid operated sections.

#### Description

The body is machined to accept one of four cartridge options for each service line. The cartridges are relief, anti-cavitation, relief and anti-cavitation and blanking cartridge. The relief valves are adjustable.

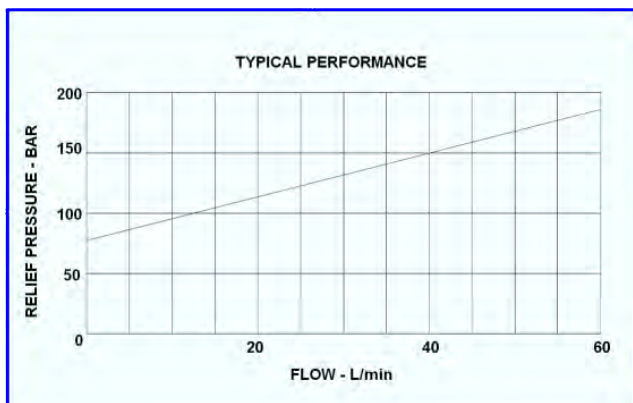


#### Application

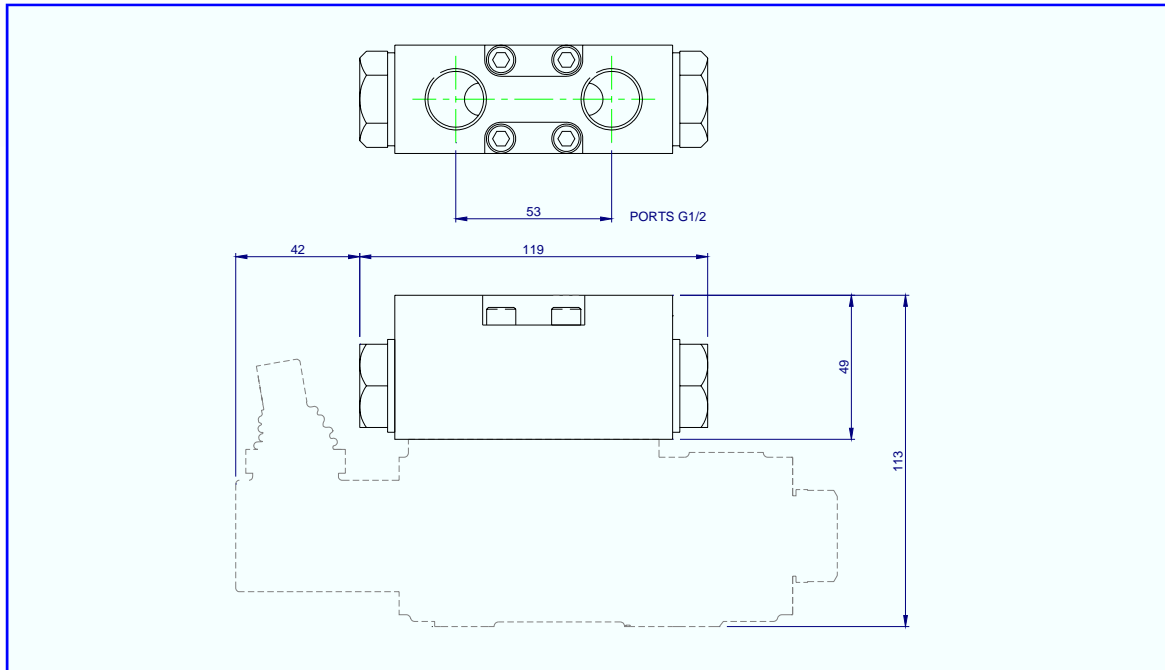
Used to protect one or both service lines from being over pressurized, it is effective when the main spool is selected or in neutral. The anti-cavitation cartridge allows oil to be drawn into the service line should the demand over take the pump supply.

#### Features

- Fast responding, adjustable direct acting relief valve.
- Large capacity anti-cavitation
- Compact construction.
- Relief and anti-cavitation in each port option.
- Hardened relief and anti-cavitation pistons for long life.



## V5 ANCILLARIES



### Service Line Relief Valve Specification

#### Performance

Rated flow	60 l/min
Maximum pressure service	250 bar
Maximum back pressure - outlet port	25 bar
Relief valve range	20 bar to 205 bar
Anticavitation	0.5 bar
Temperature rating minimum	-20°C
Temperature rating maximum	+65°C

#### Recommended Oil

Mineral based hydraulic	ISO VG37
Filtration minimum	25 micron

#### Materials

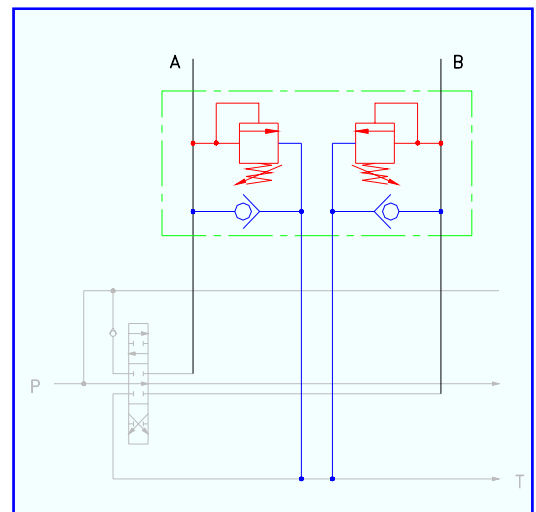
Body - Aluminium	BS 1490
External plating - zinc chromate	BS 1706 Zn3
Seals	PTFE & Nitrile
Cap screw torque	8.0 Nm

#### Mounting interface

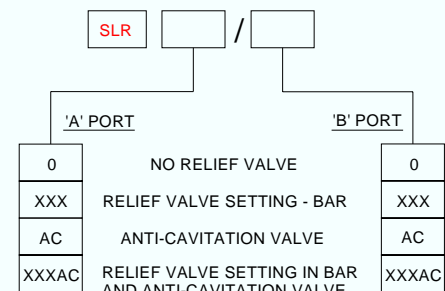
Z type

#### Weight

SLR 140/140	0.53 kg
-------------	---------



#### ORDER CODE



(STANDARD SETTING 140BAR)