

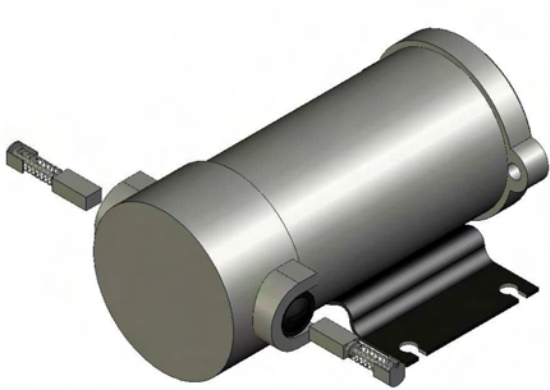
Hydraulic Projects

MARINE SPARES - MOTOR BRUSHES

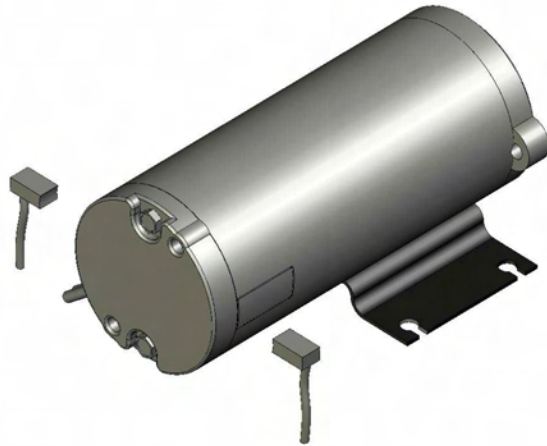
HYDRAULIC PROJECTS MARINE SPARES ARE AVAILABLE FROM STOCK, PLEASE PHONE, FAX OR EMAIL WITH YOUR REQUIREMENTS QUOTING THE ORDER CODE AND DESCRIPTION.

MOTOR BRUSHES - PR REVERSING PUMPS

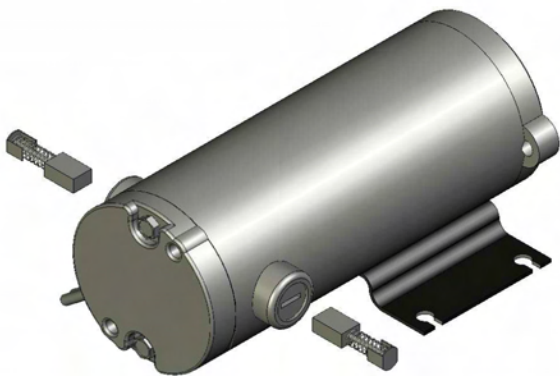
REVERSING MOTORS - USED ON PR PUMPS AND ML ACTUATORS
(MOUNTING FEET ARE NOT FITTED TO ML ACTUATORS)



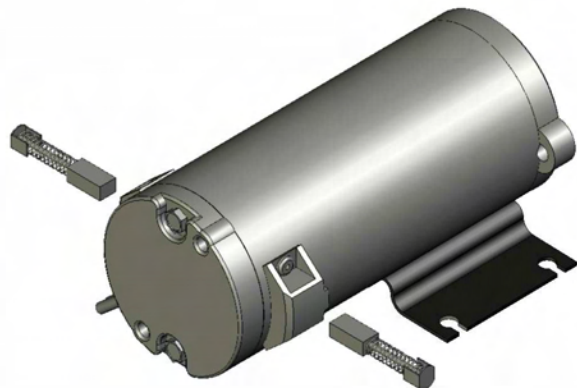
PART NO. 015220/2
DESCRIPTION: EXTERNAL BRUSH - SCREW TYPE



PART NO. 15402/2
DESCRIPTION: INTERNAL BRUSH - SOLDER TYPE



PART NO. 015405/2
DESCRIPTION: EXTERNAL BRUSH - SCREW TYPE



PART NO. 15404/2
DESCRIPTION: EXTERNAL - BRUSH CLIP TYPE

PLEASE QUOTE YOUR UNITS SERIAL NUMBER IN ALL CORRESPONDANCE

Hydraulic Projects Limited, Dawlish Business Park, Dawlish, Devon, UK, EX7 0NH
Tel: +44 (0)1626 863634 | Fax: +44 (0)1626 866283 | Email: sales@hypro.co.uk | Web: www.hypro.co.uk

Directors: C R Willcocks A Hammond J A Roberts E Slater A Wilson
Registered in England Number 786291 | Reg. Office 23 Devon Square Newton Abbot Devon

PAGE 1 OF 3

marine_brushes_iss_3

Hydraulic Projects

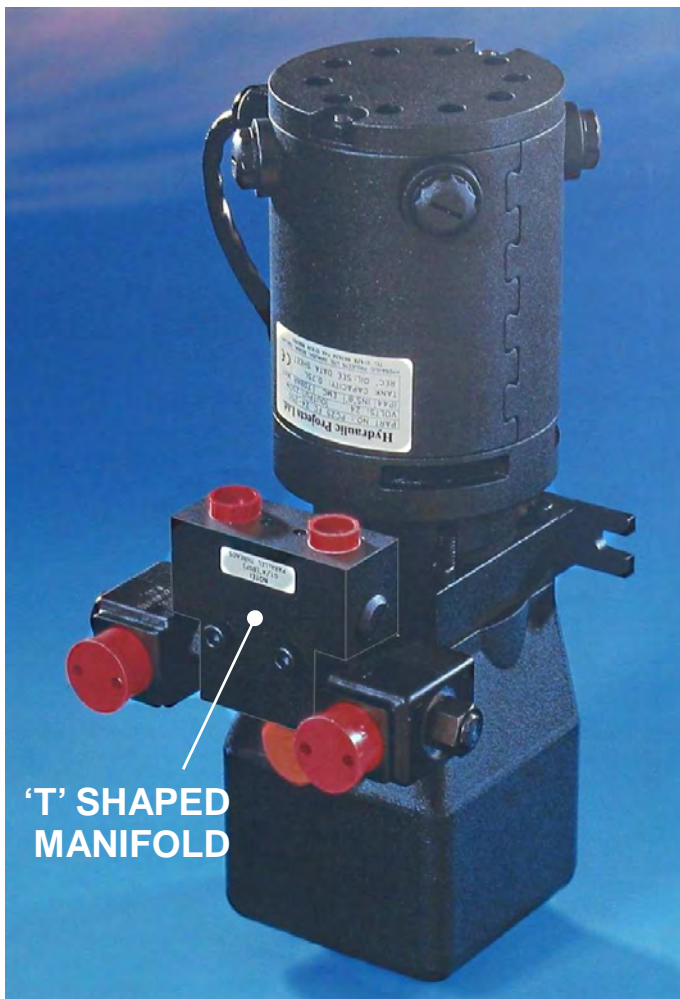
PC20, PC25 & PC45 CONSTANT RUNNING PUMP MOTOR BRUSH IDENTIFICATION

There have been a variety of motors fitted over the years to our constant running pumps. Please refer to the pictorial list on page 3 to aid identification of your motor.

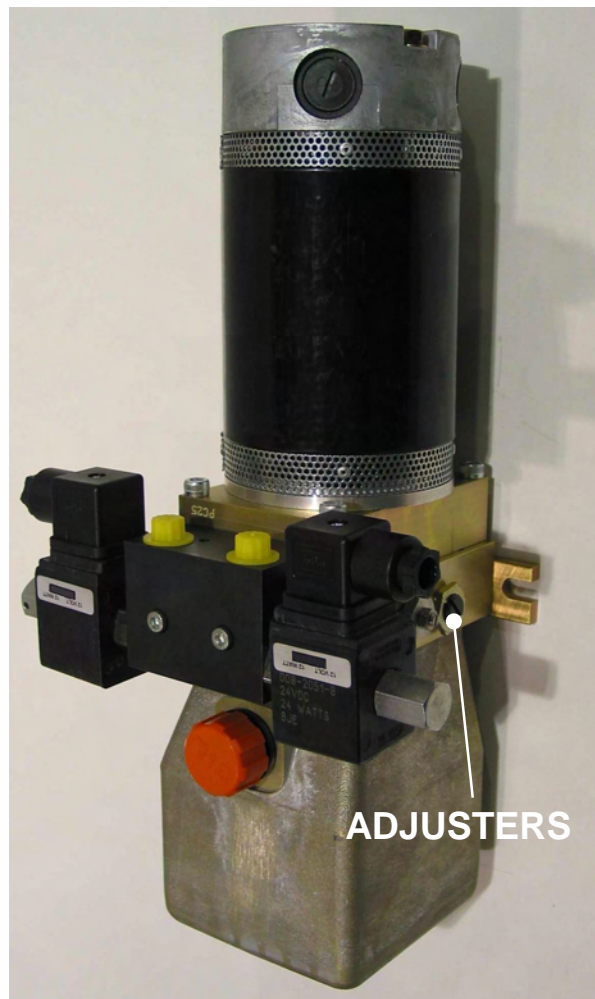
We are able to supply brushes for all the motor types.

If you require a replacement motor we are not able to supply for the older PC20 & PC25. There have been 2 types of PC20 & PC25 which are referred to as the Mk I and Mk II. The main visual difference between them is in the shape of the solenoid manifold and in the location of the relief valve and flow control adjusters. See photos below.

Please quote the serial number in all correspondence. This can be found either on a label or engraving on the side of the pump.



PC20 & PC25 MK I

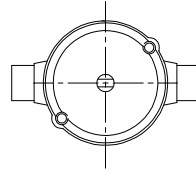
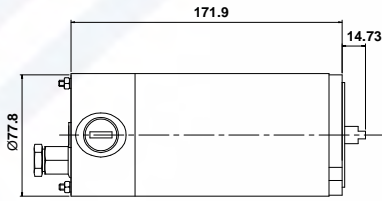


PC20 & PC25 MK II

Hydraulic Projects Limited, Dawlish Business Park, Dawlish, Devon, UK, EX7 0NH
Tel: +44 (0)1626 863634 | Fax: +44 (0)1626 866283 | Email: sales@hypro.co.uk | Web: www.hypro.co.uk

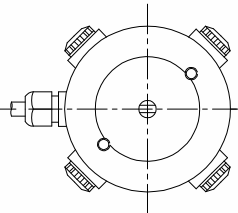
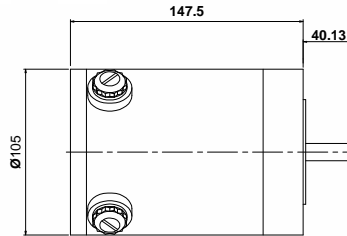
Hydraulic Projects

PC20 & PC25 MK I AND PC45



MOTOR P/N R2475
 VOLTAGE 12 OR 24 VDC
 WATTS 180
 MOUNTING 2 x 5/16" UNC
 BRUSHES 2

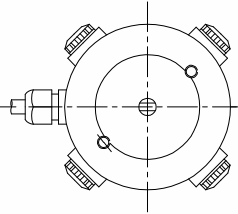
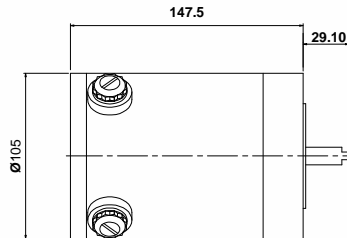
[BRUSH KIT 15401/2](#)



MOTOR P/N R2662 (24V) R2603 (12V)
 VOLTAGE 12 OR 24 VDC
 WATTS 325 (24V) OR 180 (12V)
 MOUNTING 2 x 5/16" UNC
 BRUSHES 4

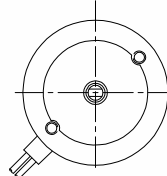
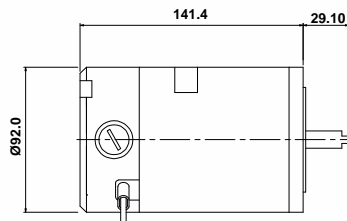
[BRUSH KIT 15401/4](#)

PC20 & PC25 MK II AND PC45



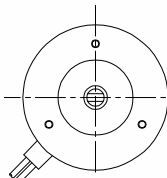
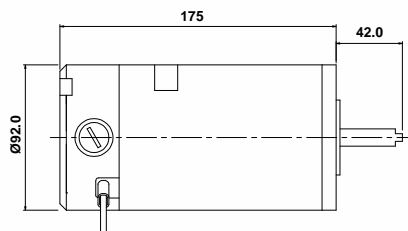
MOTOR P/N R2662 (24V) R2603 (12V)
 VOLTAGE 12 OR 24 VDC
 WATTS 325 (24V) OR 180 (12V)
 MOUNTING 2 x M8
 BRUSHES 4

[BRUSH KIT 15401/4](#)



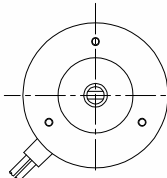
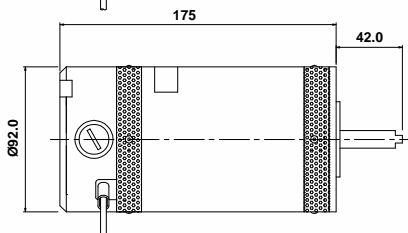
MOTOR P/N R2810 (24V) R2811 (12V)
 VOLTAGE 12 OR 24 VDC
 WATTS 180
 MOUNTING 2 x M8
 BRUSHES 2

[BRUSH KIT 15406/2](#)



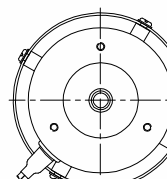
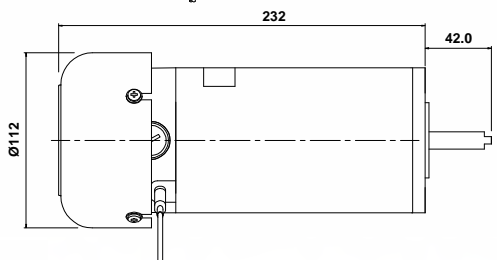
MOTOR P/N R2688
 VOLTAGE 24 VDC
 WATTS 250
 MOUNTING 3 x M5
 BRUSHES 4

[BRUSH KIT 15406/4](#)



MOTOR P/N R2698
 VOLTAGE 24 VDC
 WATTS 325
 MOUNTING 3 x M5
 BRUSHES 4

[BRUSH KIT 15406/4](#)



MOTOR P/N R2831 (12V) R2832 (24V)
 VOLTAGE 12 OR 24 VDC
 WATTS 405 (12V) OR 550 (24V)
 MOUNTING 3 x M5
 BRUSHES 4

[BRUSH KIT 15408/4](#)

Hydraulic Projects Limited, Dawlish Business Park, Dawlish, Devon, UK, EX7 0NH
 Tel: +44 (0)1626 863634 | Fax: +44 (0)1626 866283 | Email: sales@hypro.co.uk | Web: www.hypro.co.uk