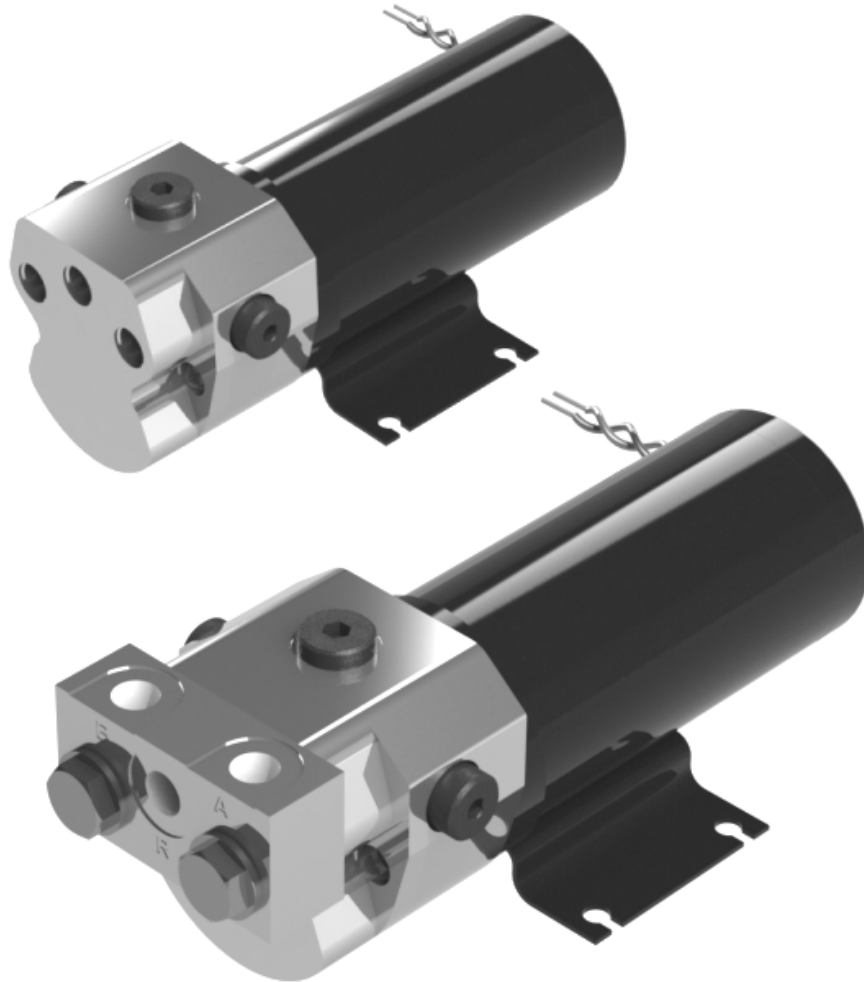


# Hy-ProDrive

Marine Steering Technology  
By Hydraulic Projects Ltd.



R4516 Top Port Adaptor Kit for PR+ Reversing pumps

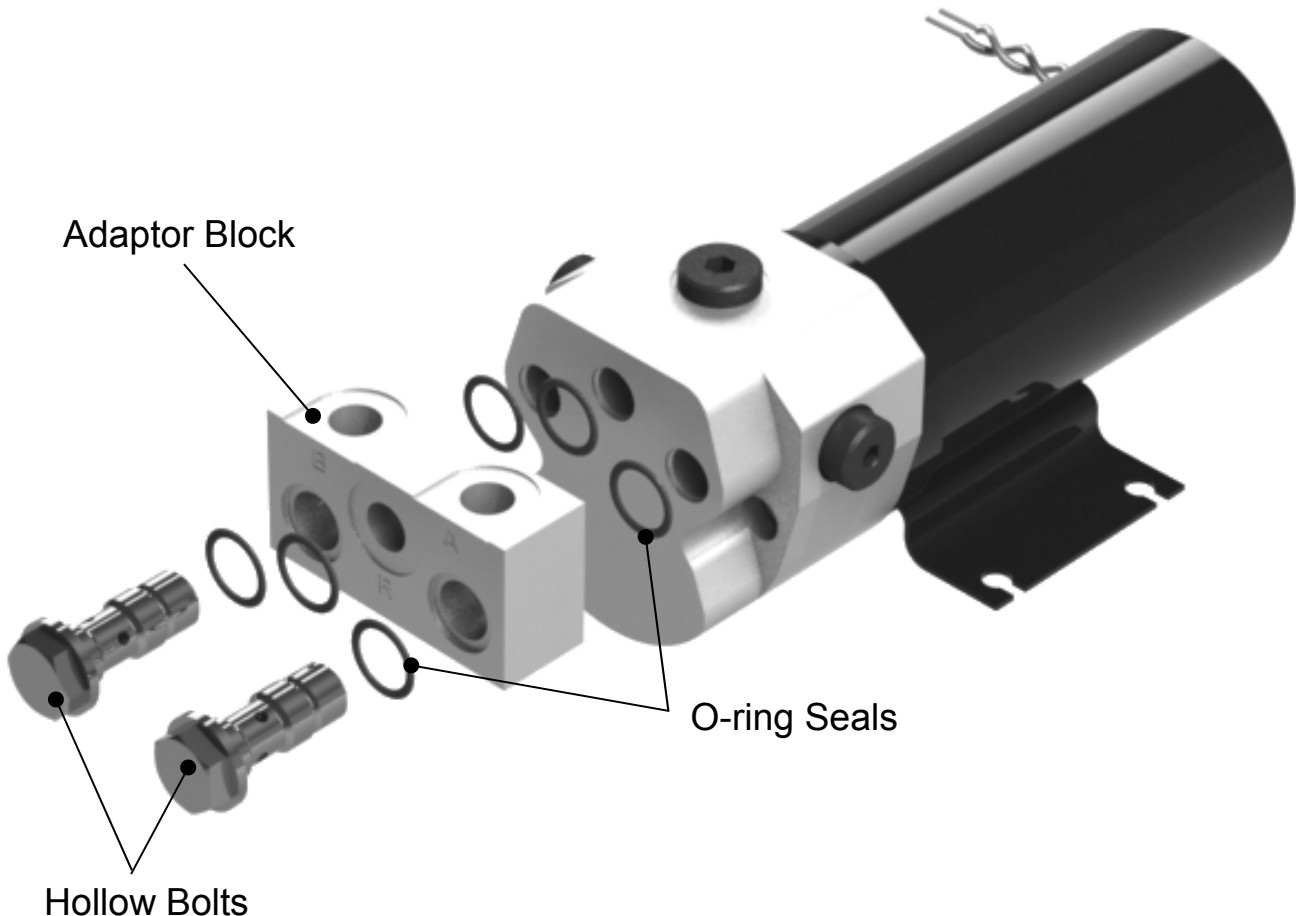
The information in this manual was, to the best of our knowledge, correct when it went to press and Hydraulic Projects Ltd. cannot be liable for any inaccuracies or omissions. There may also be differences between the specifications in the manual and the product as a result of ongoing development for which we accept no liability.

## 1) TOOLS REQUIRED

Torque wrench with 17mm A/F hex socket and 6mm hex / Allen key attachments.

## 2) INSTRUCTIONS

- i) Before assembling note the positions of the 6 O-ring seals and check the orientation of the block is as shown below.
- ii) Fasten the adaptor block to the pump body using the 2 hollow bolts. Torque to 27Nm.

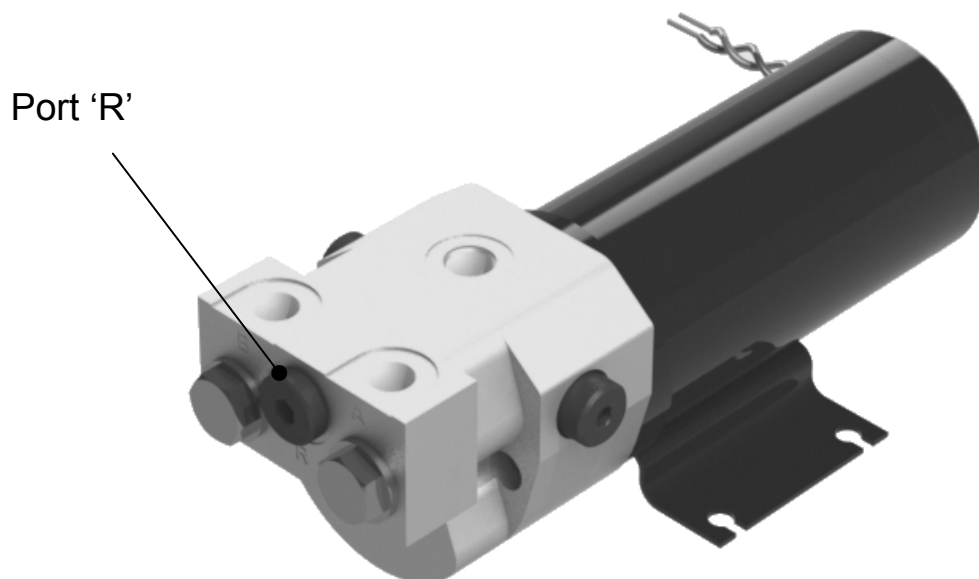
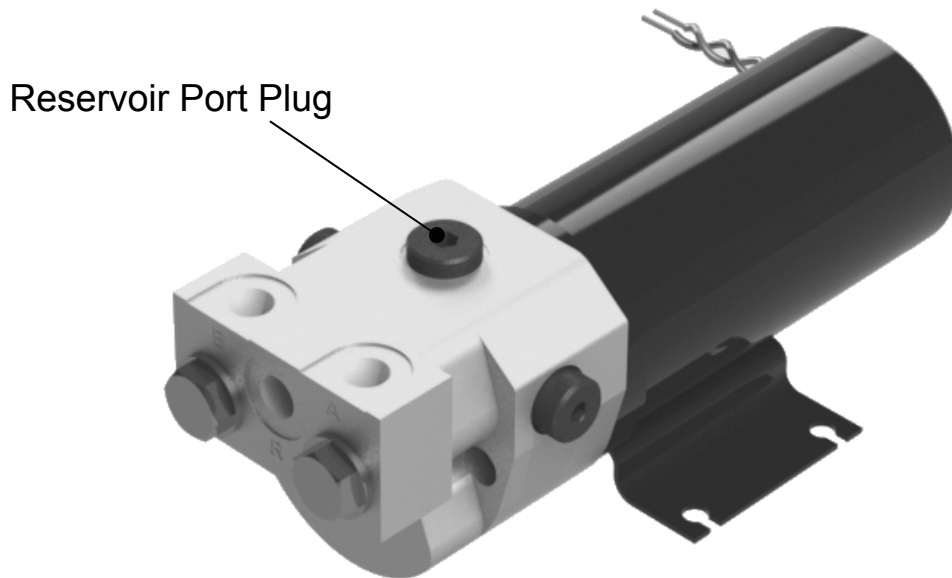


# Hy-ProDrive

Marine Steering Technology  
By Hydraulic Projects Ltd.

- iii) Remove the reservoir port plug from the drive and relocate it to the front port marked 'R' on the adaptor block (if required).

Torque to 20Nm



# Hy-ProDrive

Marine Steering Technology  
By Hydraulic Projects Ltd.



**Our in-house design and technical teams offer the expertise and support expected of an established world-class manufacturer. Our customers, ranging from the agricultural, transport, rail, fishing, construction and industrial sectors, expect named personal support, excellent quality and a rapid service with full back-up...**

**....we aim to deliver in full.**

**Call us today to discuss a bespoke solution from our extensive range or simply for competitively priced spares.**

**Full technical details of our entire range are available to download from our website**

**[www.hypro.co.uk](http://www.hypro.co.uk)**

