

Hydraulic Projects

PC20, PC25 & PC45 CONSTANT RUNNING PUMP MOTOR BRUSH IDENTIFICATION

There have been a variety of motors fitted over the years to our constant running pumps. Please refer to the pictorial list on page 2 to aid identification of your motor.

We are able to supply brushes for all the motor types.

If you require a replacement motor we are not able to supply for the older PC20 & PC25. There have been 2 types of PC20 & PC25 which are referred to as the Mk I and Mk II. The main visual difference between them is in the shape of the solenoid manifold and in the location of the relief valve and flow control adjusters. See photos below.

Please quote the serial number in all correspondence. This can be found either on a label or engraving on the side of the pump.



PC20 & PC25 MK I



PC20 & PC25 MK II

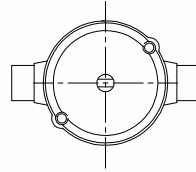
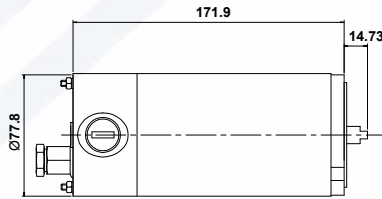
Hydraulic Projects Limited, Dawlish Business Park, Dawlish, Devon, UK, EX7 0NH
Tel: +44 (0)1626 863634 | Fax: +44 (0)1626 866283 | Email: sales@hypro.co.uk | Web: www.hypro.co.uk

Directors: C R Willcocks A Hammond J A Roberts E Slater A Wilson
Registered in England Number 786291 | Reg. Office 23 Devon Square Newton Abbot Devon

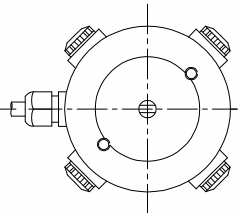
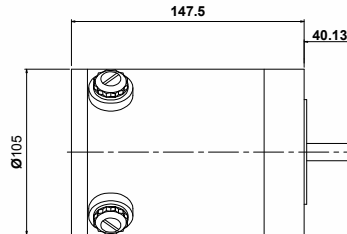
PAGE 1 OF 2

Hydraulic Projects

PC20 & PC25 MK I AND PC45

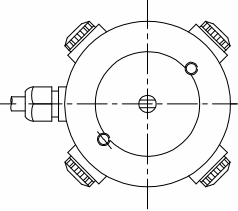
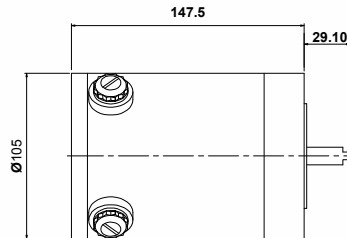


MOTOR P/N R2475
VOLTAGE 12 OR 24 VDC
WATTS 180
MOUNTING 2 x 5/16" UNC
BRUSHES 2
[BRUSH KIT](#) [15401/2](#)

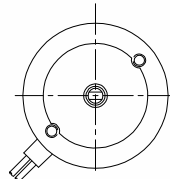
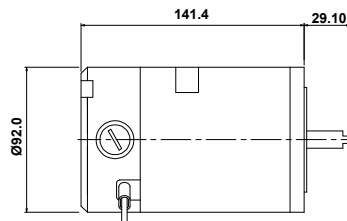


MOTOR P/N R2662 (24V) R2603 (12V)
VOLTAGE 12 OR 24 VDC
WATTS 325 (24V) OR 180 (12V)
MOUNTING 2 x 5/16" UNC
BRUSHES 4
[BRUSH KIT](#) [15401/4](#)

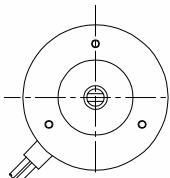
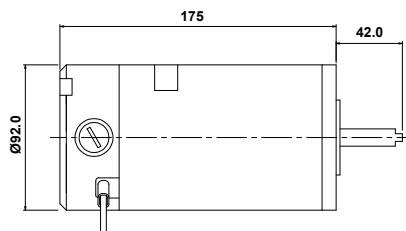
PC20 & PC25 MK II AND PC45



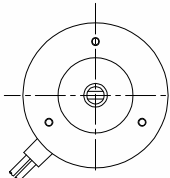
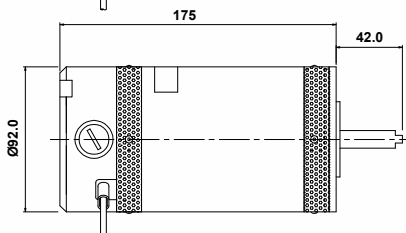
MOTOR P/N R2662 (24V) R2603 (12V)
VOLTAGE 12 OR 24 VDC
WATTS 325 (24V) OR 180 (12V)
MOUNTING 2 x M8
BRUSHES 4
[BRUSH KIT](#) [15401/4](#)



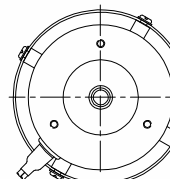
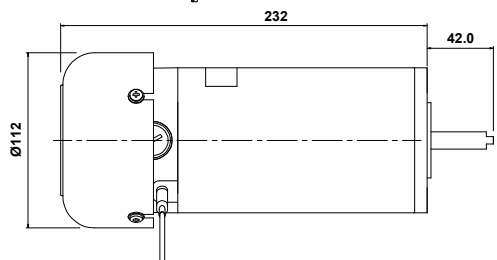
MOTOR P/N R2810 (24V) R2811 (12V)
VOLTAGE 12 OR 24 VDC
WATTS 180
MOUNTING 2 x M8
BRUSHES 2
[BRUSH KIT](#) [15406/2](#)



MOTOR P/N R2688
VOLTAGE 24 VDC
WATTS 250
MOUNTING 3 x M5
BRUSHES 4
[BRUSH KIT](#) [15406/4](#)



MOTOR P/N R2698
VOLTAGE 24 VDC
WATTS 325
MOUNTING 3 x M5
BRUSHES 4
[BRUSH KIT](#) [15406/4](#)



MOTOR P/N R2831 (12V) R2832 (24V)
VOLTAGE 12 OR 24 VDC
WATTS 405 (12V) OR 550 (24V)
MOUNTING 3 x M5
BRUSHES 4
[BRUSH KIT](#) [15408/4](#)

Hydraulic Projects Limited, Dawlish Business Park, Dawlish, Devon, UK, EX7 0NH
Tel: +44 (0)1626 863634 | Fax: +44 (0)1626 866283 | Email: sales@hypro.co.uk | Web: www.hypro.co.uk