

PR+05 REVERSING PUMP 0.5L/MIN



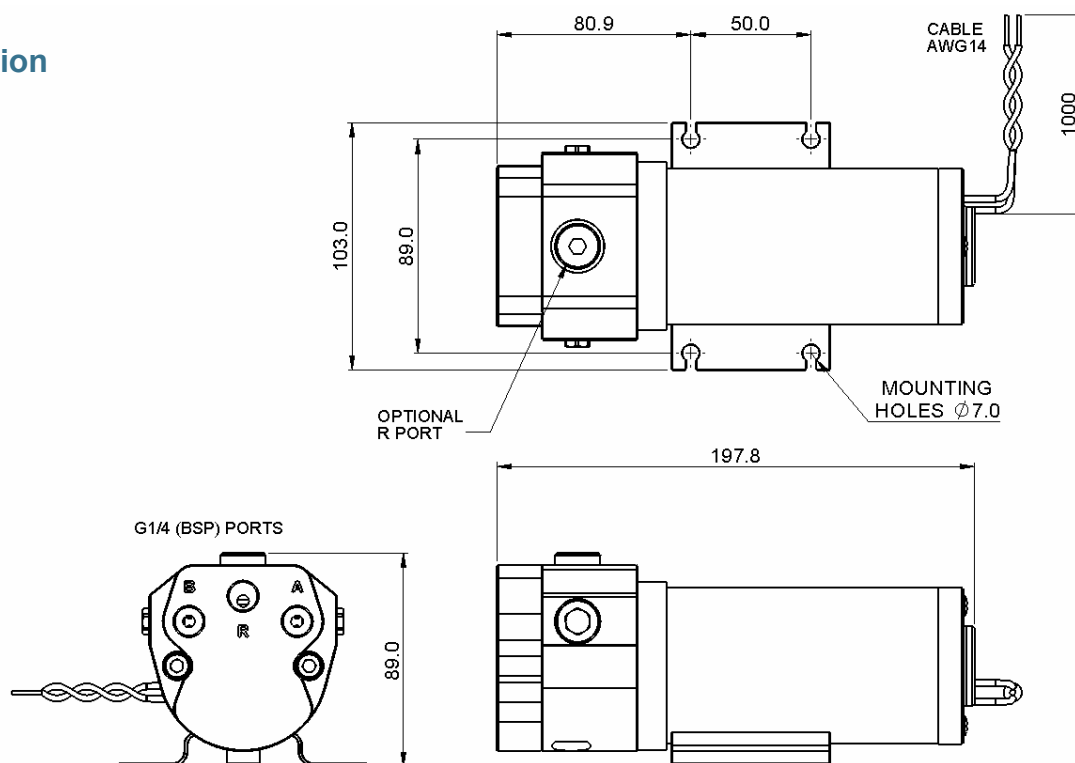
Ultra quiet. Ultra quality.

New to our range of precision gear pumps is the PR+05.

Featuring an all new gear design driven by our low current 50W motor it is suitable for smaller steering cylinders and outboard drive applications.

- 0.5 L/min nominal flow
- 12V 50W low current motor
- Suitable for cylinders 50cc to 125cc
- IP67 rating
- Zero leakage check valves
- Top port option
- Manufactured in the UK

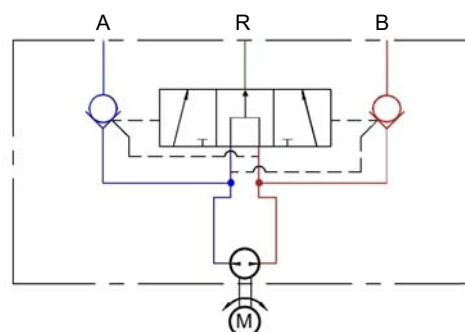
Installation



Technical data

Voltage	12 VDC
Typical amp-hour 5 bar at 25% duty	1.5 Amps
Typical max current Intermittent 40 bar	10.0 Amps
Ingress Protection	IP67
EMC Protection	BS EN 60945:2002 (DC)
Ignition protection	BS EN 28846:1993
Ambient operating Temperature	-15 to +55 deg C
Max Pressure	40 bar (intermittent operation)
Reservoir line	2 bar Max
Ports	G1/4 (BSPP) Parallel A = ram port B = ram port R = reservoir port
Rotation	Red lead to positive - Pressure to A port Black lead to positive - Pressure to B port
Hoses	Suitable for working pressure 40 bar. Minimum burst pressure 100 bar.
Fluid	ISO VG10 to VG40 Hydraulic mineral fluid meeting ISO 6743-4 HV

Circuit Diagram



Performance Graph

Typical characteristics
Q8 Auto 15 oil @ 25°C

